



A. Fixed Route Service	November 2016								November 2015			FY 2017 To Date			
	Patrons	Fare Revenue	Operating Expense	Revenue Service Miles	Revenue Service Hours	Patrons Per Hour	Farebox Recovery Ratio	Subsidy Per Patron	Patrons Per Hour	Farebox Recovery Ratio	Subsidy Per Patron	Patrons	Patrons Per Hour	Farebox Recovery Ratio	Subsidy Per Patron
1. Fixed Route Local Service	177,513	\$195,825	\$1,088,041	114,474	8,914	19.9	18.00%	\$5.03	24.7	20.03%	\$4.27	909,626	20.00	18.55%	\$5.07
2. Fixed Route Shuttle Service	31,892	\$37,147	\$310,931	39,821	3,452	9.2	11.95%	\$8.58	10.7	16.65%	\$6.87	163,319	9.28	12.46%	\$8.51
3. Muir Woods Shuttle	2,404	\$4,802	\$12,280	1,427	105	22.9	39.11%	\$3.11	10.2	15.37%	\$13.34	86,707	29.88	56.82%	\$1.55
4. Supplemental School Service	17,634	\$10,793	\$42,268	4,878	387	45.6	25.53%	\$1.78	48.9	26.41%	\$2.28	73,028	48.54	27.87%	\$1.60
5. College of Marin	2,515	\$12,540	\$17,742	1,677	186	13.5	70.68%	\$2.07	6.6	46.36%	\$9.35	9,169	12.70	67.20%	\$2.39
6. Fixed Route Stage Service	8,390	\$8,512	\$112,593	21,653	1,208	6.9	7.56%	\$12.41	6.2	11.55%	\$10.86	50,982	7.36	9.14%	\$10.60
Total	240,348	\$269,620	\$1,583,855	183,930	14,252	16.9	17.02%	\$5.47	19.4	19.73%	\$4.78	1,292,831	17.21	18.72%	\$5.27

B. Yellow Bus	November 2016								November 2015			FY 2017 To Date			
	Patrons	Fare Revenue	Operating Expense	Revenue Service Miles	Revenue Service Hours	Patrons Per Hour	Farebox Recovery Ratio	Subsidy Per Patron	Patrons Per Hour	Farebox Recovery Ratio	Subsidy Per Patron	Patrons	Patrons Per Hour	Farebox Recovery Ratio	Subsidy Per Patron
1. Yellow Bus	12,481	\$43,390	\$71,720	1,221	111	112.7	60.50%	\$2.27	126.8	65.10%	\$1.66	49,211	112.87	39.61%	\$4.34
Total	12,481	\$43,390	\$71,720	1,221	111	112.7	60.50%	\$2.27	126.8	65.10%	\$1.66	49,211	112.87	39.61%	\$4.34

C. Demand Response	November 2016								November 2015			FY 2017 To Date			
	Patrons	Fare Revenue	Operating Expense	Revenue Service Miles	Revenue Service Hours	Patrons Per Hour	Farebox Recovery Ratio	Subsidy Per Patron	Patrons Per Hour	Farebox Recovery Ratio	Subsidy Per Patron	Patrons	Patrons Per Hour	Farebox Recovery Ratio	Subsidy Per Patron
1. Catch-A-Ride	1,127	\$2,330	\$26,979	3,172	0	0.0	8.64%	\$21.87	0.0	11.87%	\$16.54	5,899	0.00	9.57%	\$22.02
2. Local Paratransit	9,677	\$18,336	\$358,931	67,360	4,409	2.2	5.11%	\$35.20	2.1	3.98%	\$44.62	51,160	2.25	5.33%	\$33.48
3. Novato Dial-A-Ride	323	\$855	\$13,013	1,733	177	1.8	6.57%	\$37.64	2.3	6.47%	\$34.40	1,685	2.01	6.08%	\$35.01
4. Volunteer Driver	1,429		\$13,701	16,232	1,607	0.9			0.9			7,763	0.90		
5. Rural Dial-A-Ride	40	\$95	\$1,099	52	30	1.3	8.64%	\$25.11				258	1.84	7.37%	\$25.83
Total	12,596	\$21,616	\$413,724	88,549	6,223	2.0	5.22%	\$31.13	2.0	4.26%	\$38.43	66,765	2.06	5.47%	\$29.64



Monthly Monitoring Route Report

November 2016

	November 2016					November 2015			FY 2017 To Date			
	Patrons	Revenue Service Hours	Patrons Per Hour	Farebox Recovery Ratio	Subsidy Per Patron	Patrons Per Hour	Farebox Recovery Ratio	Subsidy Per Patron	Patrons	Patrons Per Hour	Farebox Recovery Ratio	Subsidy Per Patron
1. Local Trunkline												
35	58,318	1,878	31.1	23.52%	\$3.33	54.8	45.83%	\$1.28	283,757	29.4	22.87%	\$3.65
36	26,154	1,106	23.7	18.53%	\$4.62	37.8	30.12%	\$2.46	138,925	24.4	19.19%	\$4.58
71	9,792	615	15.9	14.48%	\$7.50	35.5	29.64%	\$2.76	52,087	16.1	14.66%	\$7.66
Total	94,264	3,599	26.2	20.41%	\$4.12	44.6	36.84%	\$1.90	474,769	25.6	20.28%	\$4.36

	November 2016					November 2015			FY 2017 To Date			
	Patrons	Revenue Service Hours	Patrons Per Hour	Farebox Recovery Ratio	Subsidy Per Patron	Patrons Per Hour	Farebox Recovery Ratio	Subsidy Per Patron	Patrons	Patrons Per Hour	Farebox Recovery Ratio	Subsidy Per Patron
2. Local Basic												
17	21,374	1,196	17.9	16.14%	\$6.35	18.0	14.45%	\$6.33	109,599	17.9	16.25%	\$6.56
22	18,601	1,455	12.8	15.38%	\$6.05	16.8	12.57%	\$6.91	96,014	13.6	17.28%	\$5.55
23	16,911	906	18.7	16.93%	\$5.83	20.5	18.23%	\$5.16	87,592	18.9	17.08%	\$5.93
23X	4,350	273	15.9	12.68%	\$7.24				21,192	14.9	12.63%	\$8.01
29	3,416	304	11.3	10.04%	\$10.57	17.2	15.91%	\$6.38	17,057	10.5	9.61%	\$11.71
49	18,597	1,182	15.7	19.00%	\$4.81	22.7	16.53%	\$4.90	103,403	17.1	23.06%	\$3.87
Total	83,249	5,316	15.7	16.04%	\$6.05	18.6	15.27%	\$6.00	434,857	16.2	17.08%	\$5.84



Monthly Monitoring Route Report

November 2016

3. Local Connector	November 2016					November 2015			FY 2017 To Date			
	Patrons	Revenue Service Hours	Patrons Per Hour	Farebox Recovery Ratio	Subsidy Per Patron	Patrons Per Hour	Farebox Recovery Ratio	Subsidy Per Patron	Patrons	Patrons Per Hour	Farebox Recovery Ratio	Subsidy Per Patron
219	4,124	513	8.0	10.58%	\$10.11	8.2	13.80%	\$9.23	21,371	8.2	11.03%	\$9.89
228	5,916	831	7.1	11.32%	\$11.07	4.7	10.64%	\$16.51	29,650	7.1	11.46%	\$11.06
233	3,657	356	10.3	13.37%	\$7.61	10.5	16.00%	\$7.01	20,001	11.0	14.74%	\$7.03
245	4,483	358	12.5	15.25%	\$6.01				21,315	11.7	15.29%	\$6.45
251	7,816	789	9.9	11.17%	\$8.18	10.8	16.14%	\$6.92	40,120	10.0	11.66%	\$8.09
257	5,896	606	9.7	12.23%	\$8.13	11.1	16.85%	\$6.60	30,862	9.8	13.06%	\$8.02
Total	31,892	3,452	9.2	11.95%	\$8.58	9.6	15.16%	\$7.80	163,319	9.3	12.46%	\$8.51

4. Supplemental	November 2016					November 2015			FY 2017 To Date			
	Patrons	Revenue Service Hours	Patrons Per Hour	Farebox Recovery Ratio	Subsidy Per Patron	Patrons Per Hour	Farebox Recovery Ratio	Subsidy Per Patron	Patrons	Patrons Per Hour	Farebox Recovery Ratio	Subsidy Per Patron
113	1,822	34	53.4	33.84%	\$1.39	65.1	39.62%	\$1.41	6,938	55.1	36.23%	\$1.28
115	1,124	63	17.9	11.49%	\$5.67	29.4	13.89%	\$4.68	5,220	22.1	12.90%	\$4.48
117	3,373	67	50.6	20.98%	\$1.67	69.8	29.70%	\$1.55	13,928	56.7	26.22%	\$1.38
119	3,135	38	81.6	41.24%	\$0.90	76.1	46.82%	\$1.20	12,062	86.0	47.63%	\$0.76
125	1,417	61	23.4	19.85%	\$3.51	21.9	16.37%	\$5.47	5,968	25.7	21.00%	\$3.10
139	728	26	28.5	25.54%	\$2.87	17.4	14.71%	\$7.35	2,830	29.3	28.28%	\$2.66
145	1,477	20	72.4	31.53%	\$1.06	56.6	27.03%	\$1.83	6,145	83.5	35.56%	\$0.85
151	3,382	49	69.6	34.56%	\$0.98	61.5	26.38%	\$1.73	14,619	66.3	31.40%	\$1.06
154	1,176	30	39.3	26.39%	\$1.85	48.3	30.96%	\$2.00	5,318	40.0	27.49%	\$1.76
Total	17,634	387	45.6	25.53%	\$1.78	48.9	26.41%	\$2.28	73,028	48.5	27.87%	\$1.60



5. Rural	November 2016					November 2015			FY 2017 To Date			
	Patrons	Revenue Service Hours	Patrons Per Hour	Farebox Recovery Ratio	Subsidy Per Patron	Patrons Per Hour	Farebox Recovery Ratio	Subsidy Per Patron	Patrons	Patrons Per Hour	Farebox Recovery Ratio	Subsidy Per Patron
61	1,821	330	5.5	6.27%	\$15.69	6.2	11.81%	\$10.82	17,123	7.0	8.93%	\$11.06
68	6,569	878	7.5	8.04%	\$11.50	6.4	11.73%	\$10.60	33,859	7.6	9.25%	\$10.36
Total	8,390	1,208	6.9	7.56%	\$12.41	6.4	11.75%	\$10.66	50,982	7.4	9.14%	\$10.60

6. Partnership Services	November 2016					November 2015			FY 2017 To Date			
	Patrons	Revenue Service Hours	Patrons Per Hour	Farebox Recovery Ratio	Subsidy Per Patron	Patrons Per Hour	Farebox Recovery Ratio	Subsidy Per Patron	Patrons	Patrons Per Hour	Farebox Recovery Ratio	Subsidy Per Patron
122	2,515	186	13.5	70.68%	\$2.07	6.6	46.36%	\$9.35	9,169	12.7	67.20%	\$2.39
Total	2,515	186	13.5	70.68%	\$2.07	6.6	46.36%	\$9.35	9,169	12.7	67.20%	\$2.39

7. Yellow Bus	November 2016					November 2015			FY 2017 To Date			
	Patrons	Revenue Service Hours	Patrons Per Hour	Farebox Recovery Ratio	Subsidy Per Patron	Patrons Per Hour	Farebox Recovery Ratio	Subsidy Per Patron	Patrons	Patrons Per Hour	Farebox Recovery Ratio	Subsidy Per Patron
Hdn Valley	842	16	52.6	28.24%	\$8.83	43.6	22.45%	\$10.72	3,073	48.8	17.27%	\$13.77
White Hill	11,639	95	122.9	65.95%	\$1.80	147.0	75.44%	\$1.01	46,138	123.7	43.39%	\$3.72
Total	12,481	111	112.7	60.50%	\$2.27	126.8	65.10%	\$1.66	49,211	112.9	39.61%	\$4.34

8. Recreational	November 2016					November 2015			FY 2017 To Date			
	Patrons	Revenue Service Hours	Patrons Per Hour	Farebox Recovery Ratio	Subsidy Per Patron	Patrons Per Hour	Farebox Recovery Ratio	Subsidy Per Patron	Patrons	Patrons Per Hour	Farebox Recovery Ratio	Subsidy Per Patron
66	2,404	105	22.9	39.11%	\$3.11	10.2	15.37%	\$13.34	86,707	29.9	56.82%	\$1.55
Total	2,404	105	22.9	39.11%	\$3.11	10.2	15.37%	\$13.34	86,707	29.9	56.82%	\$1.55



9. Demand Response	November 2016					November 2015			FY 2017 To Date			
	Patrons	Revenue Service Hours	Patrons Per Hour	Farebox Recovery Ratio	Subsidy Per Patron	Patrons Per Hour	Farebox Recovery Ratio	Subsidy Per Patron	Patrons	Patrons Per Hour	Farebox Recovery Ratio	Subsidy Per Patron
Dillon DAR	38	25	1.5	9.93%	\$21.54				207	1.9	7.67%	\$25.06
Local Para	9,677	4,401	2.2	5.13%	\$35.06	2.1	3.99%	\$44.52	51,160	2.3	5.34%	\$33.41
Novato DAR	323	177	1.8	6.57%	\$37.64	2.3	6.47%	\$34.40	1,685	2.0	6.08%	\$35.01
PtReyesDAR	2	5	0.4	2.49%	\$93.03				51	1.7	6.27%	\$28.98
Total	10,040	4,608	2.2	5.19%	\$35.11	2.1	4.06%	\$44.14	53,103	2.2	5.38%	\$33.42



FY 2017 -- Monthly Performance Charts

Program - 1. Fixed Route Local Service

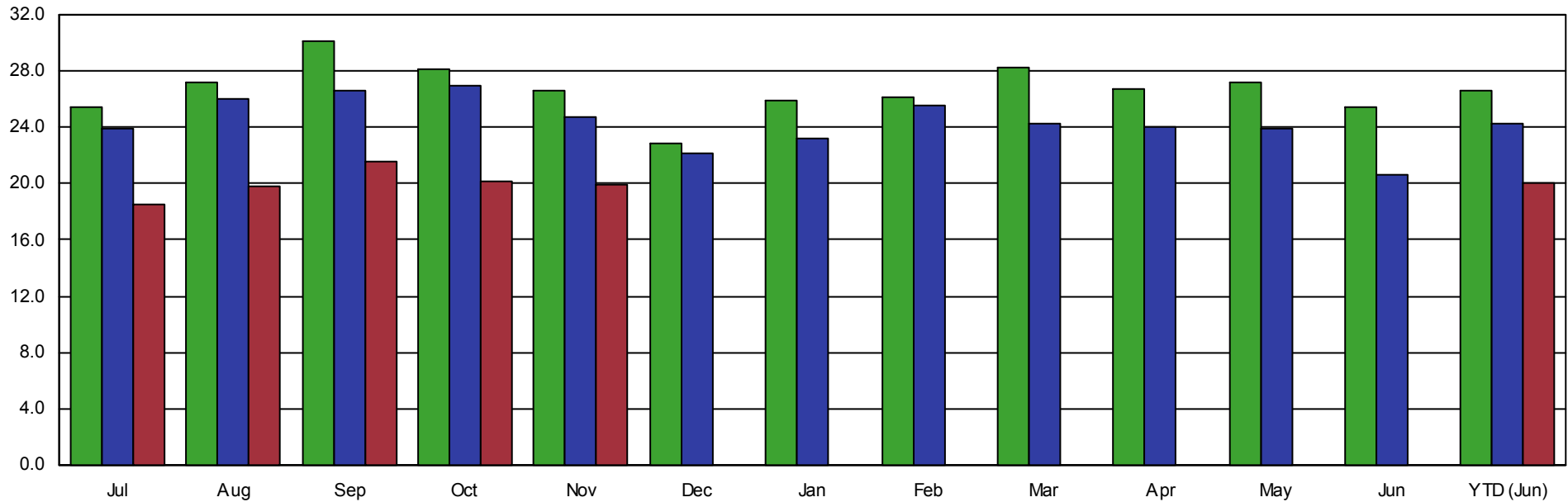
Year-To-Date through June

All Routes

Passengers Per Revenue Hour

Target: None

Two Years Prior Prior Year Current Year





FY 2017 -- Monthly Performance Charts

Program - 2. Fixed Route Shuttle Service

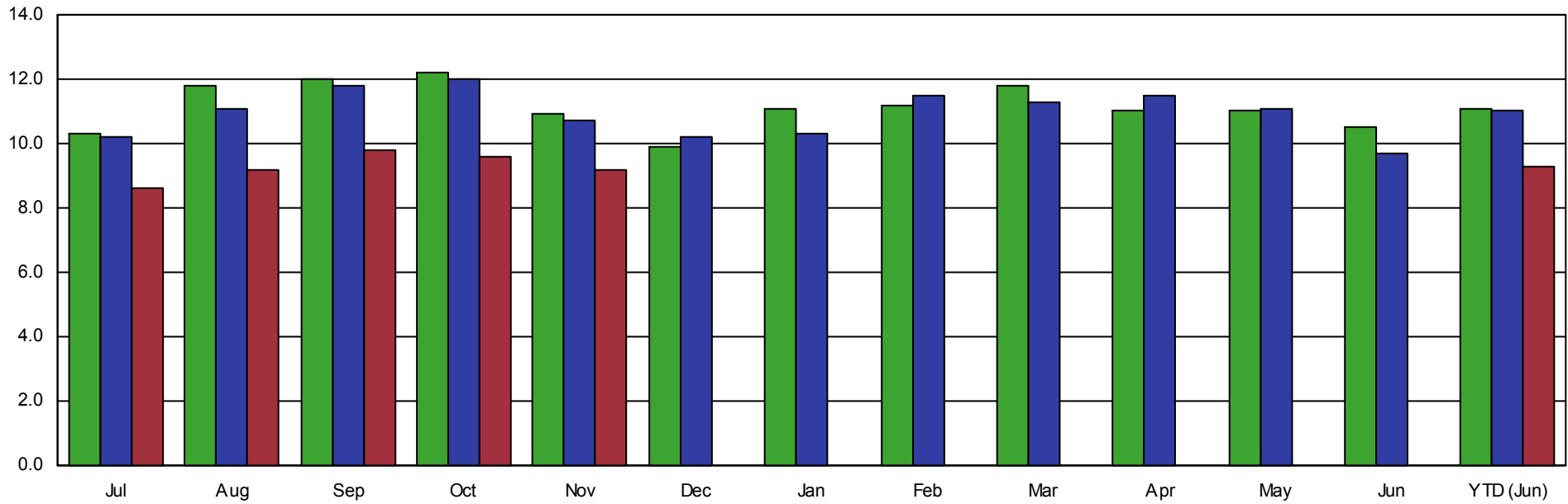
Year-To-Date through June

All Routes

Passengers Per Revenue Hour

Target: None

Two Years Prior Prior Year Current Year





FY 2017 -- Monthly Performance Charts

Program - 6. Fixed Route Stage Service

Year-To-Date through June

All Routes

Passengers Per Revenue Hour

Target: None

Two Years Prior Prior Year Current Year

