



Countywide Transportation Plan & Community Based Transportation Plan

Transportation Authority of Marin
Marin Mobility Association

May 15, 2024

CTP Background and Timeline

May 2022
Direction to
Develop a
Countywide
Transportation
Plan

December 2022
Board Discussion
on Scope for CTP

**Summer 2023-
2024**
Contract
Approval & CTP
Launch

Fall 2024
Plan Adoption
Next: Measure AA
Expenditure Plan
Review

Purpose of CTP & CBTP

- ✓ **2050 Transportation Vision**
- ✓ **Set strategic priorities**
- ✓ **Guide TAM decision-making**
- ✓ **Align planning with funding decisions and project delivery**
- ✓ **Advance equity, land use-transportation connectivity, safety, transit recovery and priority, and climate resiliency**

- ✓ **Identify emerging areas and future transportation needs**
- ✓ **Strengthen partnerships needed to deliver the plan**
- ✓ **Broaden understanding of community transportation goals**
- ✓ **Align local, county planning with regional and state guidance where feasible**
- ✓ **Advance CBTP process**
- ✓ **Strengthen Marin's position in competitive regional, state, and federal funding**
- ✓ **Convene partner agencies and build consensus**

Outcomes of CTP & CBTP

CTP Committees and Working Groups

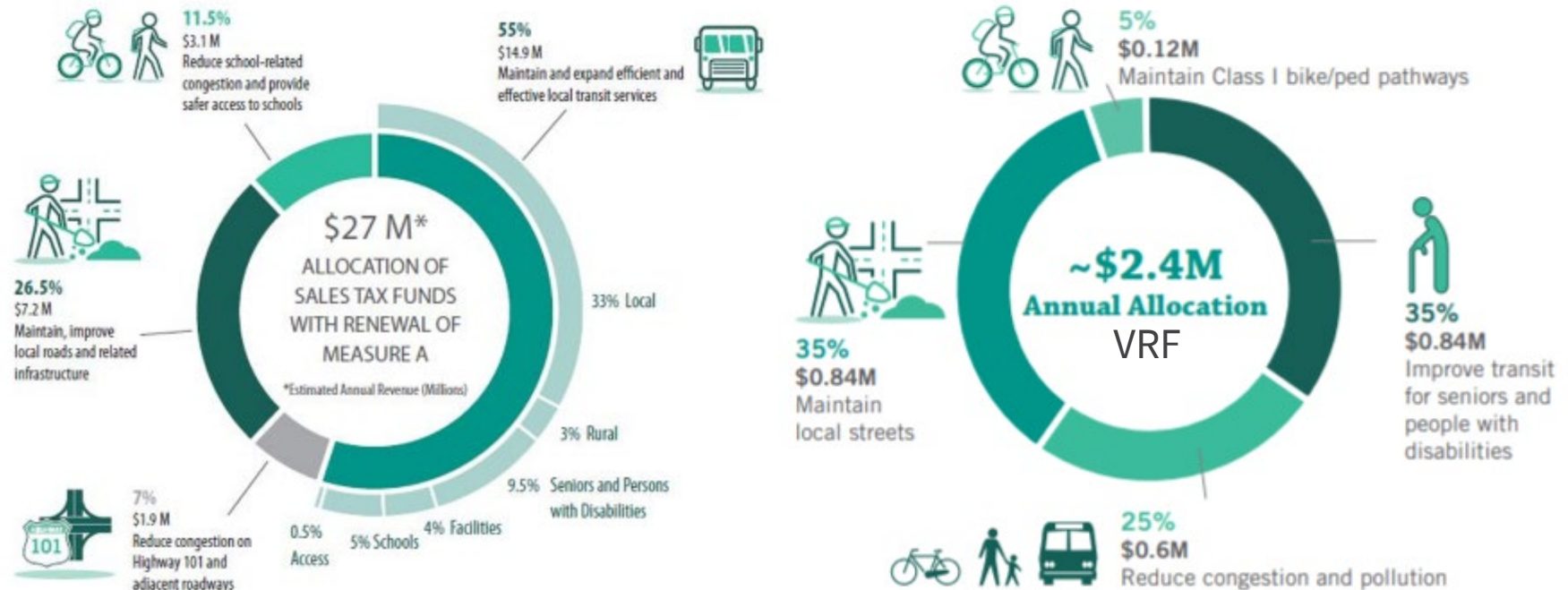
- ✓ **CTP Technical Advisory Committee**
 - Public Agency Staff
- ✓ **CTP Equity Working Group**
 - Equity focused groups, aging and disabled, teachers/workers, tribal, youth representation
- ✓ **CTP Ad-Hoc**
 - Board Sub Committee
- ✓ **Board Workshops**
 - Discussion Opportunity for Full TAM Board

TAMs Vision History

Since 2004, Marin has held a consistent vision for Transportation:

- balanced approach towards multi-modal investments
- focused on operations and maintenance of the system (fix it first)
- strong local support for transit & safe routes to schools
- limited/focused highway improvements

Incremental changes to visions include Equity and GHG reduction



What has changed since 2017?



Demographics

(Aging Population, Population & Job Shifts, Work Trends)



Environment

(Climate effects, GHG Reduction Targets, Sea Level Rise, Wildfires)



Equity

(Engagement, Capacity Building, Investment, Pricing)



Land Use- Transportation Connectivity

(Priority Areas & Sites, RHNA Housing Allocations, SMART)



Safety

(Vision Zero, Safe Systems Approach)



Travel Behavior & Vehicle Technology

(Commute Patterns, Transit Recovery, EV Adoption, New Data Sources, New Mobility Options, AV Technology)

What has changed since 2017?

- ✓ **2021 - Federal Infrastructure Investment and Jobs Act (IIJA)** – estimated to provide \$42 billion for CA
- ✓ **2018 - Regional Measure 3** – \$4.45 billion for Bay Area highway and transit improvements in the toll bridge corridors and their approach routes (SR 37, 101-580, R-SR Bridge, Ferries, North Bay Transit Access).
- ✓ **2018 - Measure AA** – \$35 million annually for transit service, local roads, safe routes to school, and 101 improvements.
- ✓ **2017 - CA Senate Bill 1** – \$5.4 billion annually over 10 years with estimated \$15 billion for local road maintenance and \$7.5 billion for transit operations and capital.



CTP Vision & Goals

Optimal
Expand
Frequent
Reliable
Future-proof

Comfort
Evacuations
Flooding
Safer Streets

Engage
Accessible
Invest
Repair

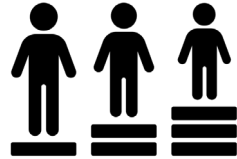
Advancing safe, equitable, and sustainable transportation together.

Adapt
Maintain
Resilient

Walk
Bike
Bus
Ferry
Rail
Roads
Highways
Emergent Technologies

Local agencies
Transit providers
Community partners
MTC/ABAG
Caltrans
CCC/BCDC
MWPA
MCE

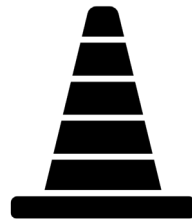
Draft CTP Goals



Created by Adrien Coquet
from Noun Project

Accessible, Affordable, and Equitable System

Provide reliable, affordable, multimodal choices for people of all ages, abilities, and income levels



Created by sentya irma
from Noun Project

Safe and Complete Multimodal Network

Grow Marin's pedestrian, bicycle, bus, ferry, rail, and road network in ways that improve safety, efficiency, and connectivity.



Created by Diego Naive
from Noun Project

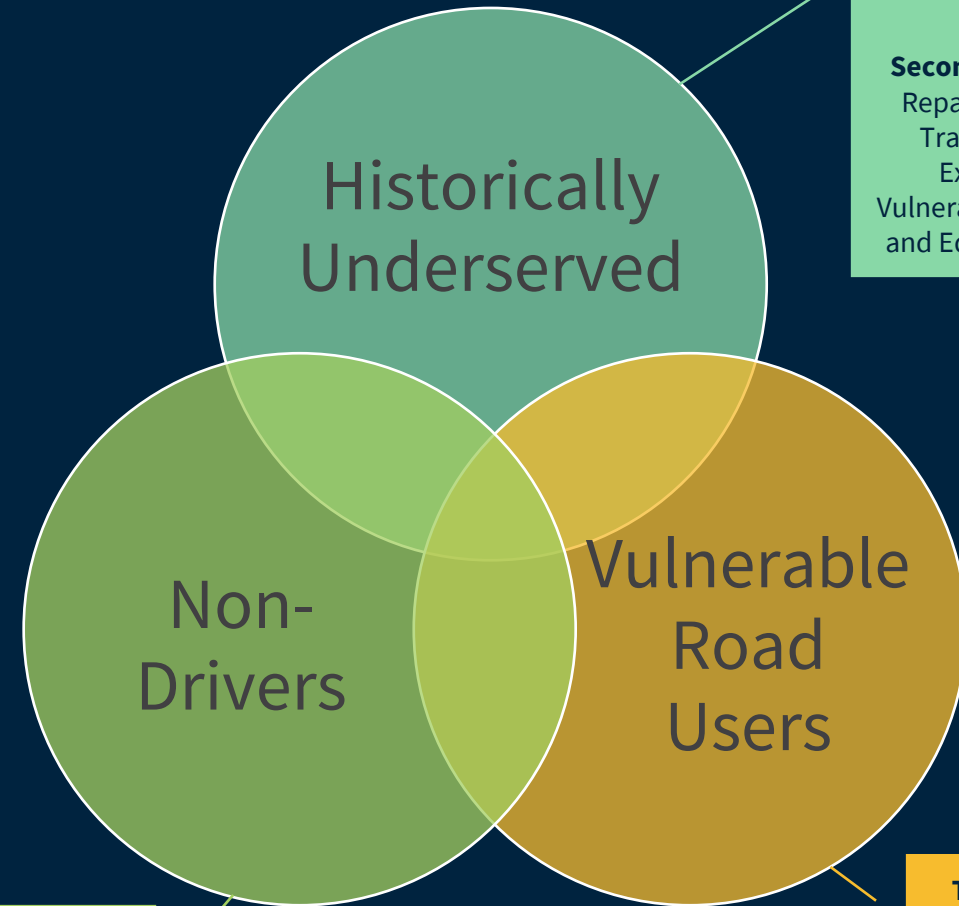
Partner to Achieve a Sustainable, Innovative, and Resilient Future

Actively partner with public agencies, community organizations, schools, and the private sector to implement transportation strategies that supports climate resiliency, the environment, housing and economic development throughout Marin's communities.

Engage
Accessible
Repair
Invest

equitable,

Transportation equity is achieved through proactive and community-centered removal of travel barriers and transportation-related disparities for historically and systemically marginalized and excluded groups.



Top Disparity/Barrier: Access

Secondary: State of Good Repair, Roadway Safety, Traffic and Emissions Exposure, Climate Vulnerability, User Outreach and Education, Travel Cost

Top Disparity/Barrier: Non-Driving Access

Secondary: Roadway Safety

Top Disparity/Barrier: Roadway Safety

Secondary: Security and Comfort, Traffic and Emissions Exposure

Historically Underserved Communities

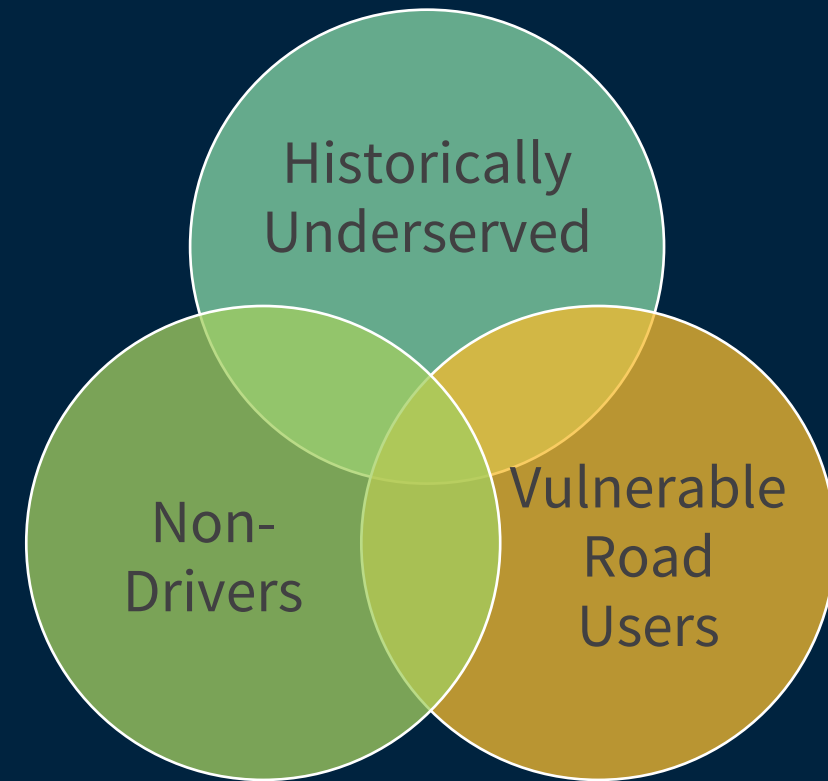
- MTC Equity Priority Communities (geographic)
- Low-income residents and workers
- Black, Hispanic, Indigenous, Asian population, incl. non-English speakers
- People with disabilities
- Rural residents and workers

Vulnerable Road Users

- Seniors 65+
- Youth <15
- People with disabilities
- Unhoused individuals
- Bicyclists and pedestrians

Non-Drivers

- Legal reasons (<16, undocumented residents, DL suspension)
- Financial or physical reasons (some people with disabilities or very low-incomes)
- Choice or comfort reasons (aging seniors, youth, other reasons)



These populations are not static, and the goal is that, over time, these lists and maybe even entire categories can be addressed through changes to the transportation system.



What we have been hearing & Draft Plan Strategies

Engagement Process & Overview

- ✓ Two coordinated tracks: stakeholder engagement and public outreach
- ✓ Data-driven process
- ✓ Fit the right strategy with the right groups at the right time & meet the public where they are
- ✓ Focus on Equity Priority Communities
- ✓ Align with MTC's CTP and CBTP guidance

Engagement Activities

- ✓ Three Focus Groups Completed
 - Environmental/Bike Coalitions
 - Business Community
 - West Marin Focus Group
- ✓ CTP Roadshow
 - Presentations to local groups
 - Citizens Oversight Committee
- ✓ Online Survey Launch in May
 - Focused on Strategies and Priorities
- ✓ Localized Pop-Up Events Underway
 - Accessible high traffic locations
 - Variety of interactive elements (i.e., Feedback walls, Live polls, Activities for kids)
- ✓ Upcoming Focus Group - Senior and Disabled Populations

Specific Needs identified

Local Transportation Needs

- Safety Improvements
- School Transportation Services
- Coordinated Signal Improvements & Vehicle Pre-emption
- Regional Bikeway Network

Regional Connections

- Richmond San Rafael Bridge Connections
- State Route 37 & Rail Line

Climate and Mobility

- ZEV infrastructure and Transition Plans
- Travel Education

Transit

- Increase Access to:
 - Priority Housing sites
 - West Marin & National Parks
 - SR-37 Bus Service Connection in Marin
 - Southern Marin Transit Hub
- Transit Priority (speed and reliability)
- Consolidation of Regional Transit Stops

Many, Many others too!

Draft CTP Strategies- Local Focus



Created by Carla Porcancula
from Noun Project



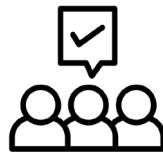
Created by parkinson
from Noun Project



Created by jms-ajson
from Noun Project



Created by Cuzato
from Noun Project



Created by metami septiana
from Noun Project

STRATEGIES WITH LOCAL FOCUS (typically locally planned and implemented)

Fix It First – operate and maintain existing streets, transit systems, and the regional pedestrian and bikeway network.

Safe System Approach – implement the new national Safe System for road users, safer vehicles, safer speeds, safer roads, and post-crash care to reach the zero deaths vision.

Safe School Travel – coordinate and support active transportation and/or bus options for schools.

Walkable Communities – a connected, accessible, and high-quality active transportation environment within a half-mile of SMART stations, transit hubs, activity centers, and commercial districts.

Community Identified Investments – community-informed investments in transportation accessibility, affordability, and comfort for historically and systemically marginalized and excluded groups.

Draft CTP Strategies- County or Regional Focus



Created by Ahmad Murtadin
from Noun Project



Created by Alex Bychkov
from Noun Project



Created by Adrien Coquet
from Noun Project



Created by ARSO
from Noun Project



Created by Ruth Miller
from Noun Project

STRATEGIES WITH COUNTY OR REGIONAL NETWORK FOCUS (typically multi-jurisdictional)

High Quality Transit – a coordinated, convenient, reliable, and accessible transit system.

Complete Active Transportation Network – a continuous primary bikeway network of pedestrian and bicycle facilities linking activity centers.

Regional Connectivity – a coordinated system of regional freeway, bridge, rail, and ferry connections and travel options to surrounding counties.

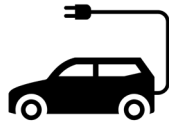
Connected & Complete Community Corridors – Reconnecting communities with complete streets and safe crossings that include context-sensitive, community-informed solutions for US-101, major and minor arterials, and major hubs.

Flexible Ride Programs – public and private ride services for seniors, people with disabilities, and other non-drivers, including services for intra-county medical trips.

Draft CTP Strategies- System Focus



Created by Kyuhong Kim
from Noun Project



Created by art supriharyati
from Noun Project



Created by gnomonix
from Noun Project



Created by early mians
from Noun Project



Created by Adrien Couvet
from Noun Project

STRATEGIES WITH SYSTEM MANAGEMENT FOCUS

(typically multi-agency, high level of partnering)

Commute Alternatives and Travel Education– ongoing travel marketing, public communication/outreach, and education campaigns to generate awareness and comfort using county travel options, modal networks, and financial assistance programs.

Zero Emission Vehicles – supporting greenhouse gas emission reductions through light duty zero emission vehicles via a coordinated network of transportation charging/fueling technology, and coordination on public agencies fleet vehicle replacement for light and medium duty vehicles.

Adaptation to Climate Change – address the effects of sea level rise, flooding, wildfires, heat, and other climate-induced events on the transportation system.

Visitor Travel Management – mode shift and communication strategies to improve the visitor experience and reduce the effects of visitor traffic and parking.

Transportation Data & System Management – Develop a county travel data approach to monitor travel patterns and changes to the network, and support management of new technologies including the introduction of connected and autonomous vehicles.

Upcoming Activities

- Survey Launch!
- Senior and Disabled Population Focus Group Strategy Refinement
- Roadshow of Presentations
- Implementation Planning
- Mapping

CTP Schedule

- ✓ One more Board workshop planned
- ✓ Draft CTP late summer
- ✓ Final CTP – Fall 2024

OCT 23	NOV – DEC 23	JAN – FEB 24	MAR- JUN 24	JUL- SEP 24	OCT- NOV 24
Purpose & Context	Vision	Needs Assessment	CTP Strategies	Draft CTP	Final CTP



Discussion questions:
What Challenges do you face in y

Questions & Comments

Transportation Authority of Marin