



Ownership of Transferred Bus Stops

ITEM 7



June 3, 2024

[marintransit.org](https://www.marintransit.org)

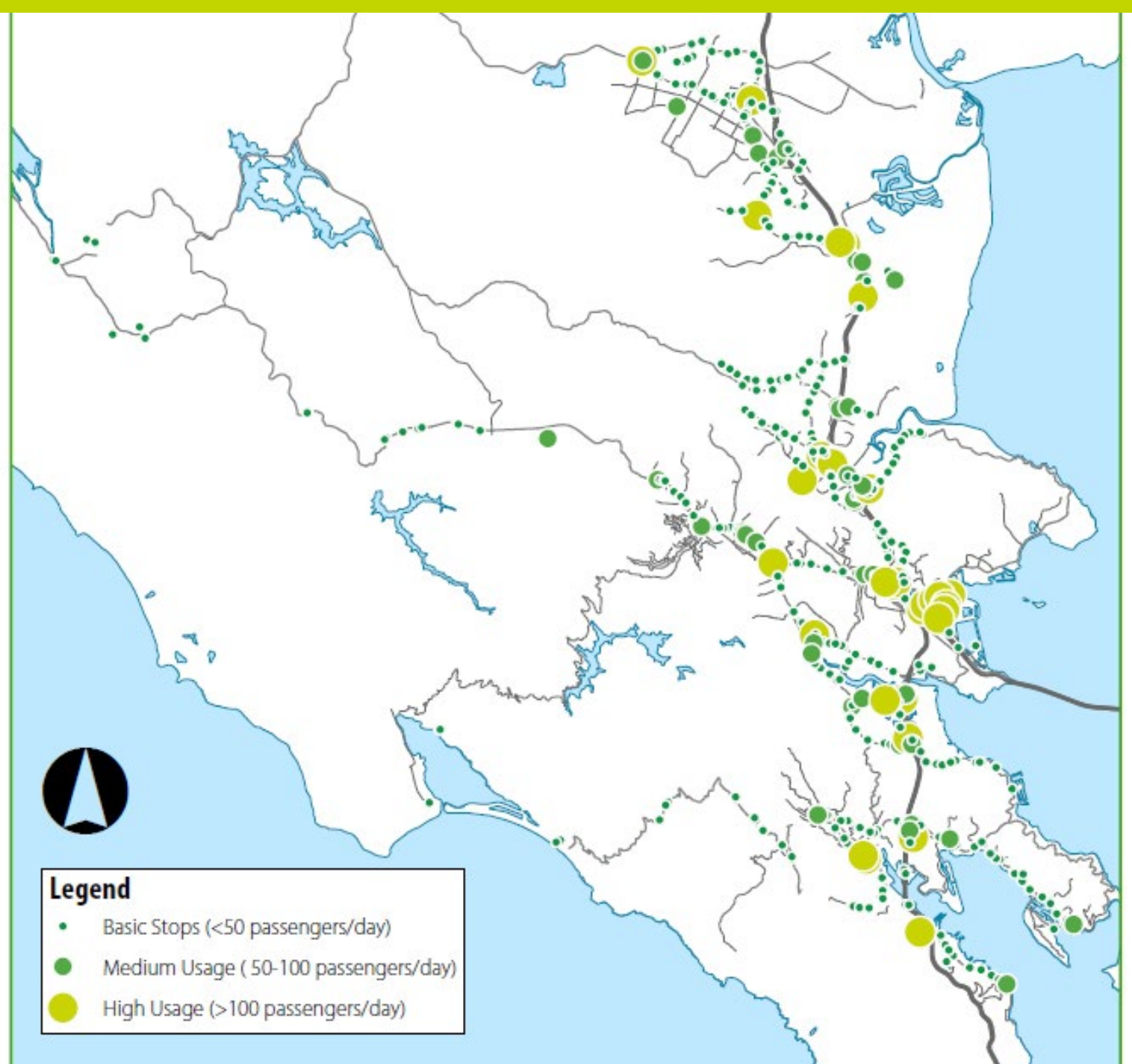
Background

Bus Stops in Marin County: ~666

Marin Transit Serves 606

Shared Pre-Pandemic 338

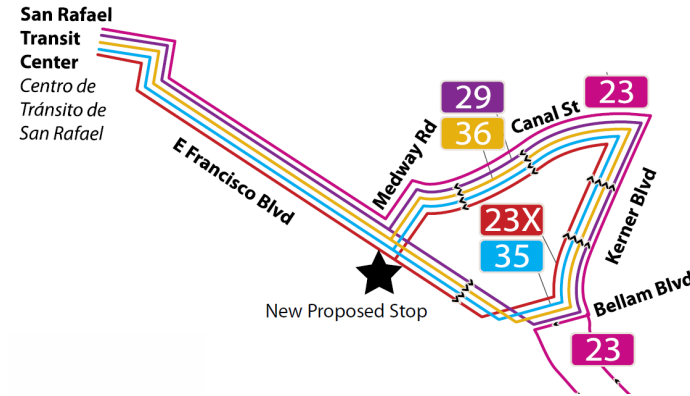
Shared Post-Pandemic 170



Current Projects

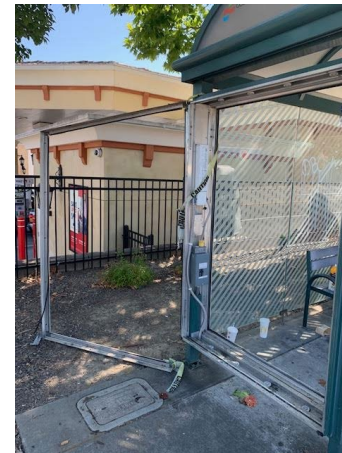
ADA Bus Stop Improvements

- \$1.7 million,
- OBAG federal funds with local match
- 24 stops locations
- 14 new shelters, 3 new benches
- Accessibility improvements
- Delayed by Caltrans approvals for 2 stops ---- Construction to start by 2025



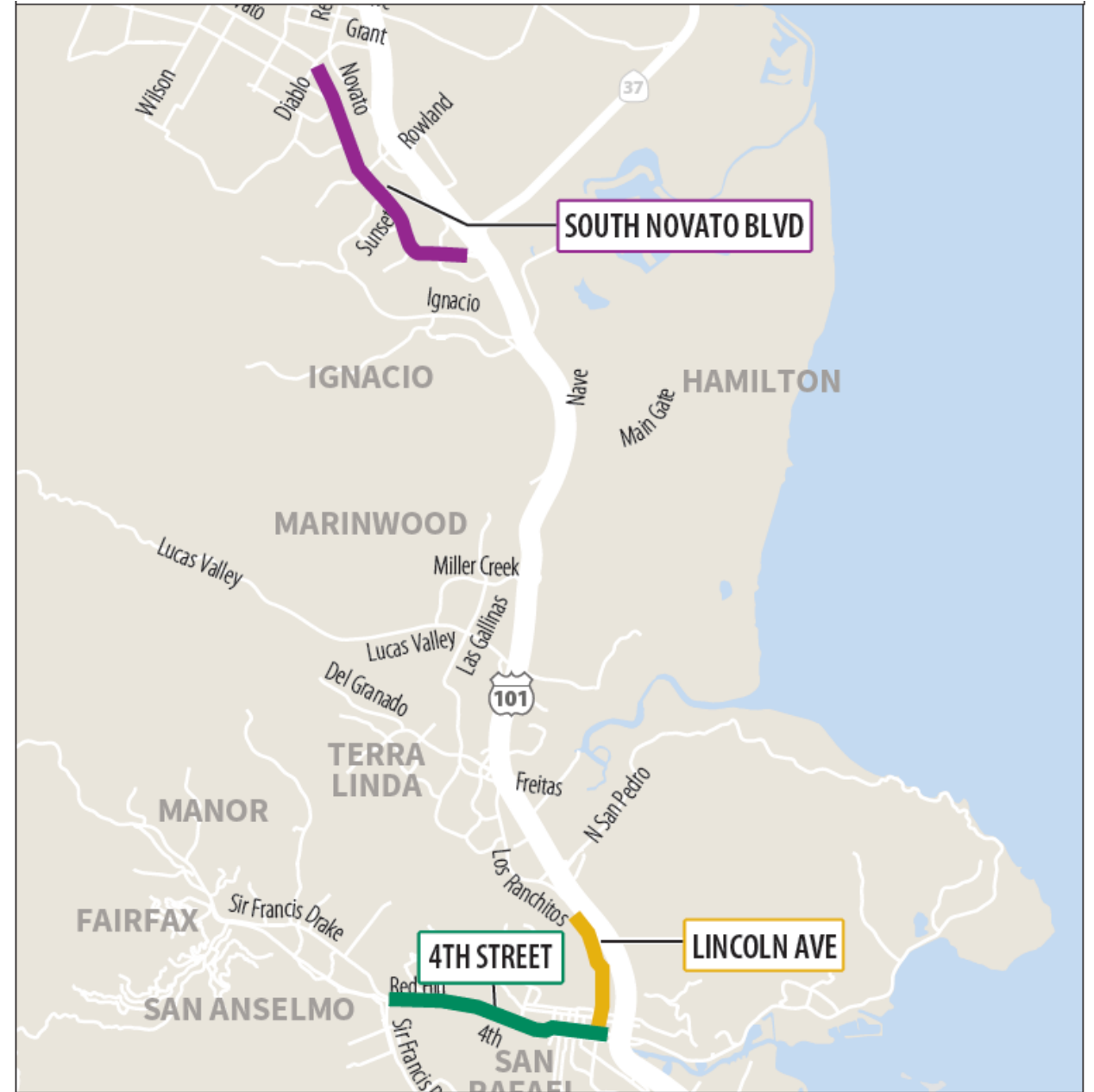
Novato Advertising Shelter Replacement

- \$95,000
- 8 shelters being replaced
- Locations previously under City advertising contract



Transit Corridor Project

- Bus stop enhancements
 - Amenities, signage
- Signal Priority work
- Conceptual Designs for transit priority treatments
- Three Corridors:
 - San Rafael -Fourth Street – ~1.5 miles
 - San Rafael - Lincoln Ave. – ~1.5 miles
 - Novato - South Novato Blvd. – ~2.1 miles
- Planning phase kicks off in June
- Recommendations by end of 2024



New Transfer of Bus Stops

- Golden Gate Transit has eliminated bus service on 7 routes in Marin County over the past 4 years
- Notification of 188 stops to transfer ownership in phases
- Current phase transfers 11 bus stop with amenities
- Amenities are in poor condition, and Marin Transit does not have the capacity to maintain or replace them



Location of Current Stops to be Transferred

Stop#	Location	Jurisdiction
40277	EB Tamalpais Ave FS Eastman	Corte Madera
40518	EB Sir Francis Drake Blvd NS Oak Manor Dr	Fairfax
40524	EB Sir Francis Drake Blvd FS Broadway	Fairfax
40334	EB Sir Francis Drake Blvd NS Maple Ave	Greenbrae
40338	EB Sir Francis Drake Blvd FS Rosebank Ave	Greenbrae
40299	SB Magnolia Ave FS Skylark Dr	Larkspur
40301	SB Magnolia Ave NS Bon Air Rd	Larkspur
40318	EB Sir Francis Drake Blvd FS Bon Air Rd	Greenbrae
40679	EB Novato Blvd FS Raposa Vista	Novato
40472	EB Sir Francis Drake Blvd FS San Anselmo Ave	San Anselmo
40474	EB Sir Francis Drake Blvd FS Ash Ave	San Anselmo

Condition of Stops for Transfer

Example Shelter in GGBHTD Transfer Request



Standard Marin Transit Shelter



Process for Transferring Stops

- Marin Transit proposal for retention or removal of amenities based on:
 - Condition and maintenance requirements
 - Ridership relative to Marin Transit amenity guidelines
- Marin Transit notified associated jurisdiction of locations and proposed plan
 - Offered jurisdictions the option of retaining trash cans, if they will service them
 - Only one of the 11 stops has high ridership warranting retaining the shelter amenities
 - Another stop is included in current bus stop improvement project
- GGBHTD will be responsible for removal of amenities



Sir Francis Drake & Rosebank
0 pax/day

Why are they so difficult?

MCTD does not own ROW

Multiple jurisdiction coordination

Permitting

ADA access needs

Each one is different....

Engineering work

Construction bid process

Federal and State Requirements

Storage for shelters and benches

Maintenance at 666 locations



Example Cost Estimates

Item	Cost Estimate	Notes
MCTD Standard Tolar Shelter (replacement)	\$15,000	Replacement – no ADA needs
MCTD Standard Shelter (new)	\$40,000 - \$250,000	Depends on site configuration and ADA needs
Maintenance – Standard Shelter	\$600 per year	4 power washings; plus 1-general cleaning
Maintenance – Glass/Plexiglass Panels	\$5,000 per year	More frequent power washing (weekly)
Bus Stop Maintenance Budget	\$160,000 per year	Includes Redwood and Grant & Marin City

Next Steps and Future Considerations

- Notify GGBHTD of amenity removal at 9 of 11 stops
- Submit RM3 application to TAM for next phase of bus stop improvements
- Planning for Updated bus stop inventory
- Need for updated stop level passenger data
- Need for support from local jurisdictions
 - Permitting
 - Installation
 - Incorporate improvements into other streetscape/roadway improvement projects

Thank you

CONTACT

Lauren Gradia

Director of Finance and Capital Programs

Lgradia@marintransit.org

