

Bus Maintenance & Storage Facility

July 2023

- Goals:**
- Secure battery-electric bus charging
 - Reduce ongoing operational costs
 - Increase competition for future service operation contracts
 - Reduce long term risks

Fixed Route Project Cost: \$44.5 million
Workforce Development: \$2.2 million
Total Fleet: 81 fixed route, 34 demand response
Maintenance Bays: 3 - 5

Summary

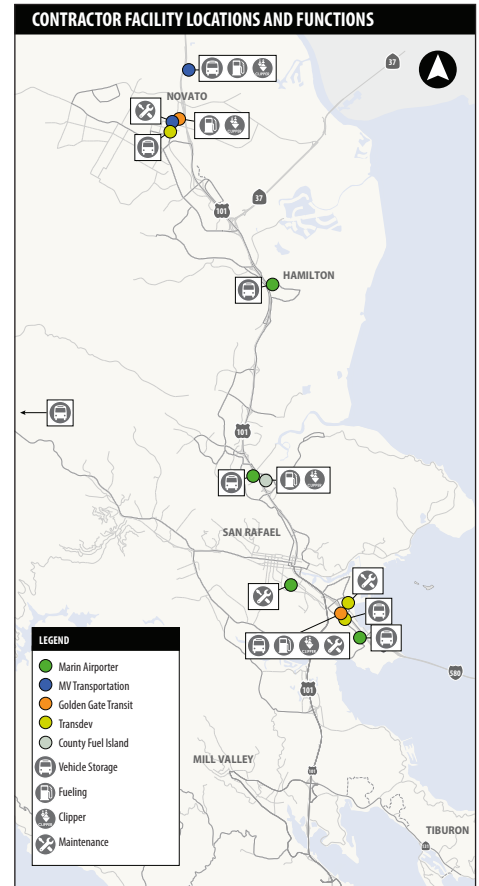
Marin Transit’s biggest need is for a centralized fixed route facility for maintenance, parking, and charging of zero-emission buses. This facility will support continued investment in electric buses, improve operational efficiency, increase competition for contracted service, and reduce long term risk.

Marin Transit operates fixed route, paratransit, and mobility management services under contracts with three providers. Marin Transit relies on these contractors for maintenance and storage facilities. This reliance undermines our ability to competitively attract a range of contractors.

Marin Transit has successfully acquired three small sites; a 2.5-acre parcel in Novato to park vehicles, a 0.71-acre parcel in San Rafael for paratransit maintenance, and an adjacent 0.95-acre parcel for paratransit parking. Despite these successes, we still lack a facility to maintain fixed route vehicles and install sufficient electric bus charging to fulfill state mandates and Marin County’s sustainability goals.

Site Evaluation Criteria

- Minimize deadhead or non/revenue service costs
- Accessible to US 101
- Sufficient size and accessibility to maneuver and store buses
- Compatible land use/good neighbor potential
- Primary egress and ingress routes are compatible with local circulation plan
- Site readiness (Ready for development)
- Minimal vulnerability in case of a natural disaster
- Minimal Title VI equity impacts
- Minimal or no Environmental Justice impacts



Ideal Fixed Route Facility Capacity

- 40’ Buses - 14 spaces
- 35’ Buses - 24 spaces
- 30’ Buses - 12 spaces
- 29’ Shuttle - 12 spaces
- Employee parking - 50+ spaces
- Maintenance Bays - 3 to 5



Example of maintenance bays

Successes

600 Rush Landing

- Marin Transit purchased 600 Rush Landing in January 2020
- Site is 2.5 acres and irregularly shaped, bordered by U.S. Hwy 101 on the western border, and SMART train tracks to the east
- Site currently accomodates parking for 20 buses, with charging for four battery electric buses



Bus parking at 600 Rush Landing

Site Improvement Projects

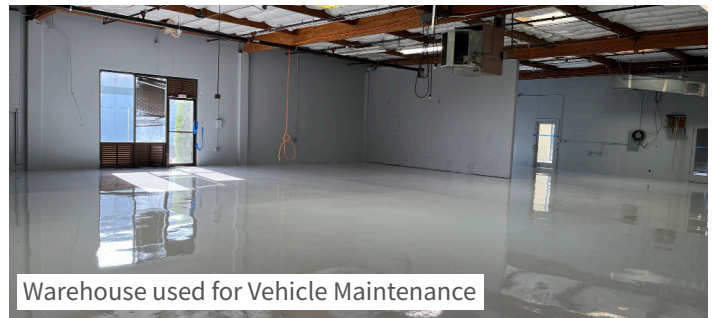
- ⚡ Battery Electric Bus power and charging installation
- 💡 Enhanced fencing & lighting

Kerner Blvd

- Marin Transit purchased 3000 Kerner Blvd in July 2021
- Site is 0.71 acres and has a 10,000 sf building on it which is used for maintenance of paratransit vehicles and administration of Marin Access Programs.
- Marin Transit purchased the adjacent 0.95 acre parcel in 2022 to accomodate paratransit vehicle parking.



3000 Kerner Blvd Streetview



Warehouse used for Vehicle Maintenance

Remaining Needs

While the sites above fulfill some of Marin Transit's needs, they cannot accomodate Marin Transit's whole fleet. The District is still searching for a single larger site. Continued needs include:

- Fixed Route Maintenance, Parking and Electric Bus Charging
- Electrification of existing bus parking facilities
- Parking for Yellow Buses



Yellow Bus and Hybrid Bus in service



Example of maintenance building

Maintenance Facility

Marin Transit would ideally like a property with existing maintenance potential. Desired features include:

- Warehouse or automotive use
- Roll up garage doors/ maintenance bays
- 16+ feet clear height
- Ingress/egress - access and flow
- All utilities
- Parts supply storage
- Some office space and break-room
- Potential for electric vehicle charging
- Space for driver amenities
- Workforce training space