



A. Fixed Route Service	June 2016								June 2015			FY 2016 To Date			
	Patrons	Fare Revenue	Operating Expense	Revenue Service Miles	Revenue Service Hours	Patrons Per Hour	Farebox Recovery Ratio	Subsidy Per Patron	Patrons Per Hour	Farebox Recovery Ratio	Subsidy Per Patron	Patrons	Patrons Per Hour	Farebox Recovery Ratio	Subsidy Per Patron
1. Fixed Route Local Service	172,741	\$183,081	\$1,071,163	108,762	8,396	20.6	17.09%	\$5.14	25.4	13.60%	\$4.96	2,166,143	24.26	21.67%	\$4.22
2. Fixed Route Shuttle Service	32,805	\$48,487	\$309,950	43,718	3,398	9.7	15.64%	\$7.97	10.5	14.08%	\$7.23	434,282	10.95	14.23%	\$7.08
3. Muir Woods Shuttle	20,203	\$39,461	\$79,597	10,369	741	27.3	49.58%	\$1.99	23.3	39.47%	\$3.04	116,942	25.03	45.57%	\$2.50
4. Supplemental School Service	8,025	\$17,621	\$26,695	2,177	174	46.2	66.01%	\$1.13	51.9	66.02%	\$1.00	185,935	46.49	28.61%	\$2.36
5. College of Marin												20,360	6.95	46.77%	\$8.46
6. Fixed Route Stage Service	11,632	\$14,622	\$112,115	24,057	1,368	8.5	13.04%	\$8.38	7.3	14.30%	\$8.83	107,788	6.63	9.76%	\$10.42
Total	245,406	\$303,272	\$1,599,521	189,084	14,077	17.4	18.96%	\$5.28	20.2	16.49%	\$5.06	3,031,450	19.33	20.76%	\$4.70

B. Yellow Bus	June 2016								June 2015			FY 2016 To Date			
	Patrons	Fare Revenue	Operating Expense	Revenue Service Miles	Revenue Service Hours	Patrons Per Hour	Farebox Recovery Ratio	Subsidy Per Patron	Patrons Per Hour	Farebox Recovery Ratio	Subsidy Per Patron	Patrons	Patrons Per Hour	Farebox Recovery Ratio	Subsidy Per Patron
1. Yellow Bus	9,354	\$31,195	\$54,601	943	72	129.9	57.13%	\$2.50				138,304	128.06	56.64%	\$2.26
Total	9,354	\$31,195	\$54,601	943	72	129.9	57.13%	\$2.50				138,304	128.06	56.64%	\$2.26

C. Demand Response	June 2016								June 2015			FY 2016 To Date			
	Patrons	Fare Revenue	Operating Expense	Revenue Service Miles	Revenue Service Hours	Patrons Per Hour	Farebox Recovery Ratio	Subsidy Per Patron	Patrons Per Hour	Farebox Recovery Ratio	Subsidy Per Patron	Patrons	Patrons Per Hour	Farebox Recovery Ratio	Subsidy Per Patron
1. Catch-A-Ride	1,402	\$3,958	\$29,326	4,192	0	0.0	13.50%	\$18.09	0.0	11.61%	\$16.60	16,520	0.00	12.07%	\$16.97
2. Local Paratransit	10,303	\$19,082	\$373,482	72,248	4,639	2.2	5.11%	\$34.40	2.3	4.43%	\$39.82	124,765	2.21	4.66%	\$37.61
3. Novato Dial-A-Ride	315	\$751	\$15,998	2,572	163	1.9	4.69%	\$48.41	2.2	4.48%	\$35.79	4,397	2.05	5.67%	\$37.75
4. Volunteer Driver	1,519		\$22,563	13,754	1,452	1.0			0.8			16,734	0.94		
5. Rural Dial-A-Ride	42	\$140	\$1,295	0	25	1.7	10.81%	\$27.50				253	1.67	7.36%	\$34.29
Total	13,581	\$23,931	\$442,664	92,766	6,278	2.2	5.41%	\$30.83	2.2	4.60%	\$35.60	162,669	2.12	4.88%	\$33.37



Monthly Monitoring Route Report

June 2016

1. Local Trunkline	June 2016					June 2015			FY 2016 To Date			
	Patrons	Revenue Service Hours	Patrons Per Hour	Farebox Recovery Ratio	Subsidy Per Patron	Patrons Per Hour	Farebox Recovery Ratio	Subsidy Per Patron	Patrons	Patrons Per Hour	Farebox Recovery Ratio	Subsidy Per Patron
35	46,949	1,446	32.5	28.23%	\$2.82	54.4	31.47%	\$1.84	472,718	50.8	46.85%	\$1.34
36	19,281	804	24.0	21.25%	\$4.20	31.8	17.54%	\$3.78	119,593	34.5	29.63%	\$2.67
45	6,284	263	23.9	14.80%	\$4.47	25.3	13.54%	\$4.98	190,001	23.8	17.62%	\$4.47
71	14,252	669	21.3	16.56%	\$5.27	38.6	21.70%	\$2.96	259,678	33.7	29.42%	\$2.89
Total	86,766	3,181	27.3	22.84%	\$3.64	38.8	21.85%	\$2.94	1,041,990	36.6	31.75%	\$2.45

2. Local Basic	June 2016					June 2015			FY 2016 To Date			
	Patrons	Revenue Service Hours	Patrons Per Hour	Farebox Recovery Ratio	Subsidy Per Patron	Patrons Per Hour	Farebox Recovery Ratio	Subsidy Per Patron	Patrons	Patrons Per Hour	Farebox Recovery Ratio	Subsidy Per Patron
17	21,997	1,244	17.7	14.04%	\$6.27	19.2	9.81%	\$6.83	280,486	18.3	16.26%	\$6.03
22	17,763	1,284	13.8	10.93%	\$8.16	14.9	7.11%	\$9.12	243,635	16.4	14.59%	\$6.83
23	19,201	979	19.6	17.45%	\$5.23	24.7	13.17%	\$5.13	268,218	20.4	19.64%	\$5.04
23X	2,548	189	13.5	9.57%	\$8.43				2,548	13.5	9.57%	\$8.43
29	7,202	560	12.9	11.78%	\$8.64	17.5	8.73%	\$7.61	181,786	17.3	17.50%	\$6.18
49	17,264	959	18.0	14.19%	\$6.07	22.4	11.77%	\$5.74	147,480	21.7	17.60%	\$4.99
Total	85,975	5,215	16.5	13.53%	\$6.65	19.5	9.94%	\$6.75	1,124,153	18.5	16.91%	\$5.86



Monthly Monitoring Route Report

June 2016

3. Local Connector	June 2016					June 2015			FY 2016 To Date			
	Patrons	Revenue Service Hours	Patrons Per Hour	Farebox Recovery Ratio	Subsidy Per Patron	Patrons Per Hour	Farebox Recovery Ratio	Subsidy Per Patron	Patrons	Patrons Per Hour	Farebox Recovery Ratio	Subsidy Per Patron
219	4,810	529	9.1	14.53%	\$8.61	8.9	12.26%	\$8.64	55,610	8.4	11.78%	\$9.44
228	3,872	580	6.7	12.35%	\$11.79	5.4	8.18%	\$14.62	17,522	5.5	9.52%	\$14.64
233	4,049	363	11.2	18.41%	\$6.64	11.0	15.04%	\$6.66	49,494	11.3	14.57%	\$6.75
245	2,184	227	9.6	15.49%	\$7.84				2,184	9.6	15.49%	\$7.84
251	7,671	779	9.9	16.00%	\$7.85	9.9	13.26%	\$7.80	98,886	10.7	13.84%	\$7.30
257	5,870	616	9.5	14.68%	\$8.15	9.5	12.89%	\$8.10	71,429	11.1	13.75%	\$7.01
259	4,349	305	14.2	21.50%	\$5.13	13.7	17.77%	\$5.35	139,157	14.4	17.90%	\$5.18
Total	32,805	3,398	9.7	15.64%	\$7.97	10.5	14.08%	\$7.23	434,282	11.0	14.23%	\$7.08

4. Supplemental	June 2016					June 2015			FY 2016 To Date			
	Patrons	Revenue Service Hours	Patrons Per Hour	Farebox Recovery Ratio	Subsidy Per Patron	Patrons Per Hour	Farebox Recovery Ratio	Subsidy Per Patron	Patrons	Patrons Per Hour	Farebox Recovery Ratio	Subsidy Per Patron
113	640	12	54.2	89.62%	\$0.30	69.3	62.28%	\$0.92	14,601	55.5	39.48%	\$1.68
115	565	23	24.6	33.36%	\$4.41	20.5	19.75%	\$6.34	16,366	29.3	16.84%	\$4.61
117	2,139	41	52.6	66.33%	\$0.99	95.5	141.70%	-\$0.65	33,705	61.1	33.84%	\$1.65
119	1,263	16	81.0	122.11%	-\$0.47	52.6	46.49%	\$1.75	30,906	71.8	47.79%	\$1.28
125	523	23	22.6	47.57%	\$3.37	23.8	24.99%	\$4.66	13,197	22.2	17.65%	\$5.44
139	224	10	22.9	36.45%	\$4.28	29.7	29.45%	\$3.69	6,391	20.3	15.44%	\$6.53
145	386	7	55.9	66.15%	\$0.87	89.1	88.68%	\$0.19	10,268	61.6	31.72%	\$1.61
151	1,532	29	53.6	61.10%	\$1.07	44.5	46.78%	\$1.74	42,643	56.2	27.92%	\$1.90
154	753	14	52.7	92.04%	\$0.22	43.0	45.51%	\$1.83	17,858	49.6	35.38%	\$1.87
Total	8,025	174	46.2	66.01%	\$1.13	48.4	55.61%	\$1.41	185,935	46.5	28.61%	\$2.36



Monthly Monitoring Route Report

June 2016

	June 2016					June 2015			FY 2016 To Date			
	Patrons	Revenue Service Hours	Patrons Per Hour	Farebox Recovery Ratio	Subsidy Per Patron	Patrons Per Hour	Farebox Recovery Ratio	Subsidy Per Patron	Patrons	Patrons Per Hour	Farebox Recovery Ratio	Subsidy Per Patron
5. Rural												
61	4,661	492	9.5	14.72%	\$7.28	8.6	16.78%	\$7.26	37,276	6.8	10.73%	\$9.88
65						1.8	4.00%	\$40.47	220	1.4	1.64%	\$54.03
68	6,971	876	8.0	12.12%	\$9.12	6.9	13.26%	\$9.67	70,292	6.6	9.39%	\$10.56
Total	11,632	1,368	8.5	13.04%	\$8.38	7.3	14.30%	\$8.83	107,788	6.6	9.76%	\$10.42

	June 2016					June 2015			FY 2016 To Date			
	Patrons	Revenue Service Hours	Patrons Per Hour	Farebox Recovery Ratio	Subsidy Per Patron	Patrons Per Hour	Farebox Recovery Ratio	Subsidy Per Patron	Patrons	Patrons Per Hour	Farebox Recovery Ratio	Subsidy Per Patron
6. Partnership Services												
122									20,360	6.9	46.77%	\$8.46
Total									20,360	6.9	46.77%	\$8.46

	June 2016					June 2015			FY 2016 To Date			
	Patrons	Revenue Service Hours	Patrons Per Hour	Farebox Recovery Ratio	Subsidy Per Patron	Patrons Per Hour	Farebox Recovery Ratio	Subsidy Per Patron	Patrons	Patrons Per Hour	Farebox Recovery Ratio	Subsidy Per Patron
7. Yellow Bus												
Brookside												\$0.00
Hdn Valley	642	14	45.9	20.11%	\$13.25				8,669	41.2	18.10%	\$13.26
White Hill	8,712	58	150.2	66.10%	\$1.71				129,635	149.1	65.98%	\$1.52
Total	9,354	72	129.9	57.13%	\$2.50				138,304	128.1	56.64%	\$2.26



Monthly Monitoring Route Report

June 2016

	June 2016					June 2015			FY 2016 To Date			
	Patrons	Revenue Service Hours	Patrons Per Hour	Farebox Recovery Ratio	Subsidy Per Patron	Patrons Per Hour	Farebox Recovery Ratio	Subsidy Per Patron	Patrons	Patrons Per Hour	Farebox Recovery Ratio	Subsidy Per Patron
8. Recreational												
66	20,203	741	27.3	49.58%	\$1.99	23.3	39.47%	\$3.04	116,942	25.0	45.57%	\$2.50
Total	20,203	741	27.3	49.58%	\$1.99	23.3	39.47%	\$3.04	116,942	25.0	45.57%	\$2.50

	June 2016					June 2015			FY 2016 To Date			
	Patrons	Revenue Service Hours	Patrons Per Hour	Farebox Recovery Ratio	Subsidy Per Patron	Patrons Per Hour	Farebox Recovery Ratio	Subsidy Per Patron	Patrons	Patrons Per Hour	Farebox Recovery Ratio	Subsidy Per Patron
9. Demand Response												
Dillon DAR	42	25	1.7	10.81%	\$27.50				253	1.7	7.36%	\$34.29
Local Para	10,303	4,637	2.2	5.11%	\$34.38	2.3	4.43%	\$39.82	124,765	2.2	4.75%	\$36.88
Novato DAR	315	163	1.9	4.69%	\$48.41	2.2	4.48%	\$35.79	4,397	2.1	5.67%	\$37.75
Total	10,660	4,825	2.2	5.11%	\$34.77	2.3	4.43%	\$39.69	129,415	2.2	4.78%	\$36.90



FY 2016 -- Monthly Performance Charts

Program - 1. Fixed Route Local Service

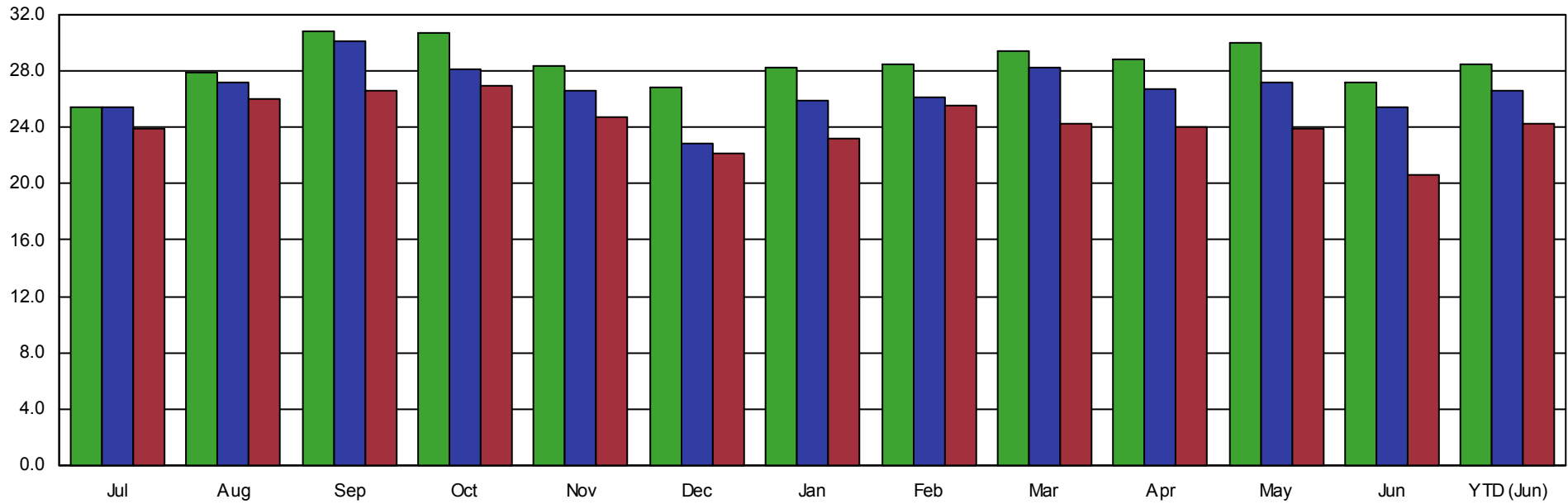
Year-To-Date through June

All Routes

Passengers Per Revenue Hour

Target: None

Two Years Prior Prior Year Current Year





FY 2016 -- Monthly Performance Charts

Program - 2. Fixed Route Shuttle Service

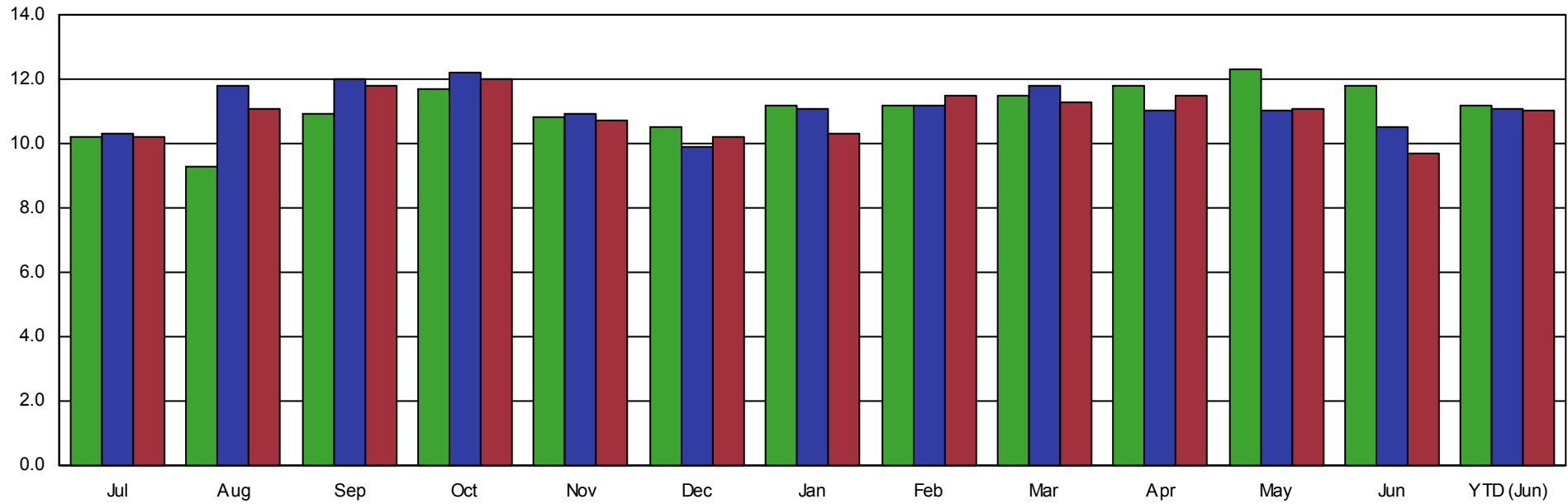
Year-To-Date through June

All Routes

Passengers Per Revenue Hour

Target: None

Two Years Prior Prior Year Current Year





FY 2016 -- Monthly Performance Charts

Program - 6. Fixed Route Stage Service

Year-To-Date through June

All Routes

Passengers Per Revenue Hour

Target: None

Two Years Prior Prior Year Current Year

