



A. Fixed Route Service	May 2016								May 2015			FY 2016 To Date			
	Patrons	Fare Revenue	Operating Expense	Revenue Service Miles	Revenue Service Hours	Patrons Per Hour	Farebox Recovery Ratio	Subsidy Per Patron	Patrons Per Hour	Farebox Recovery Ratio	Subsidy Per Patron	Patrons	Patrons Per Hour	Farebox Recovery Ratio	Subsidy Per Patron
1. Fixed Route Local Service	176,177	\$191,604	\$1,004,195	94,019	7,379	23.9	19.08%	\$4.61	27.2	20.67%	\$4.00	1,993,402	24.64	22.13%	\$4.14
2. Fixed Route Shuttle Service	37,184	\$42,186	\$302,128	50,457	3,339	11.1	13.96%	\$6.99	11.0	12.30%	\$6.71	401,477	11.07	14.09%	\$7.01
3. Muir Woods Shuttle	12,506	\$27,277	\$47,940	6,537	476	26.3	56.90%	\$1.65	24.9	49.63%	\$2.37	96,739	24.61	44.87%	\$2.61
4. Supplemental School Service	20,627	\$16,150	\$52,480	5,817	446	46.2	30.77%	\$1.76	54.0	43.75%	\$1.41	177,910	46.51	26.92%	\$2.42
5. College of Marin	1,597	\$14,817	\$26,785	2,753	258	6.2	55.32%	\$7.49				20,360	6.95	46.77%	\$8.46
6. Fixed Route Stage Service	9,826	\$12,013	\$108,484	25,479	1,455	6.8	11.07%	\$9.82	6.2	10.01%	\$10.34	96,156	6.46	9.43%	\$10.66
Total	257,917	\$304,047	\$1,542,013	185,062	13,353	19.3	19.72%	\$4.80	21.7	20.76%	\$4.21	2,786,044	19.52	20.94%	\$4.65

B. Yellow Bus	May 2016								May 2015			FY 2016 To Date			
	Patrons	Fare Revenue	Operating Expense	Revenue Service Miles	Revenue Service Hours	Patrons Per Hour	Farebox Recovery Ratio	Subsidy Per Patron	Patrons Per Hour	Farebox Recovery Ratio	Subsidy Per Patron	Patrons	Patrons Per Hour	Farebox Recovery Ratio	Subsidy Per Patron
1. Yellow Bus	16,532	\$41,615	\$85,917	1,651	126	131.2	48.44%	\$2.68				128,950	127.93	56.60%	\$2.24
Total	16,532	\$41,615	\$85,917	1,651	126	131.2	48.44%	\$2.68				128,950	127.93	56.60%	\$2.24

C. Demand Response	May 2016								May 2015			FY 2016 To Date			
	Patrons	Fare Revenue	Operating Expense	Revenue Service Miles	Revenue Service Hours	Patrons Per Hour	Farebox Recovery Ratio	Subsidy Per Patron	Patrons Per Hour	Farebox Recovery Ratio	Subsidy Per Patron	Patrons	Patrons Per Hour	Farebox Recovery Ratio	Subsidy Per Patron
1. Catch-A-Ride	1,387	\$3,366	\$27,908	3,986	0	0.0	12.06%	\$17.69	0.0	12.05%	\$16.74	15,118	0.00	11.92%	\$16.87
2. Local Paratransit	10,482	\$19,255	\$433,610	72,235	4,668	2.2	4.44%	\$39.53	2.3	4.41%	\$40.40	114,462	2.21	4.62%	\$37.90
3. Novato Dial-A-Ride	354	\$813	\$14,227	1,972	190	1.9	5.71%	\$37.89	2.4	4.89%	\$32.04	4,082	2.06	5.77%	\$36.93
4. Volunteer Driver	1,700		\$25,024	14,152	1,552	1.1			0.8			15,215	0.93		
5. Rural Dial-A-Ride	20	\$70	\$1,256	0	20	1.0	5.58%	\$59.28				211	1.67	6.81%	\$35.64
Total	13,943	\$23,504	\$502,024	92,345	6,430	2.2	4.68%	\$34.32	2.2	4.69%	\$34.96	149,088	2.12	4.83%	\$33.60



Monthly Monitoring Route Report

May 2016

1. Local Trunkline	May 2016					May 2015			FY 2016 To Date			
	Patrons	Revenue Service Hours	Patrons Per Hour	Farebox Recovery Ratio	Subsidy Per Patron	Patrons Per Hour	Farebox Recovery Ratio	Subsidy Per Patron	Patrons	Patrons Per Hour	Farebox Recovery Ratio	Subsidy Per Patron
35	38,152	721	52.9	44.17%	\$1.40	58.6	40.15%	\$1.40	425,769	54.2	50.25%	\$1.18
36	8,373	239	35.0	27.54%	\$2.85	38.0	27.37%	\$2.62	100,312	37.7	32.07%	\$2.38
45	17,056	708	24.1	16.17%	\$4.67	27.2	20.68%	\$4.00	183,717	23.8	17.71%	\$4.47
71	20,930	642	32.6	25.79%	\$3.28	38.9	27.95%	\$2.54	245,426	34.8	30.61%	\$2.76
Total	84,511	2,310	36.6	28.66%	\$2.67	41.7	29.69%	\$2.31	955,224	37.8	32.85%	\$2.34

2. Local Basic	May 2016					May 2015			FY 2016 To Date			
	Patrons	Revenue Service Hours	Patrons Per Hour	Farebox Recovery Ratio	Subsidy Per Patron	Patrons Per Hour	Farebox Recovery Ratio	Subsidy Per Patron	Patrons	Patrons Per Hour	Farebox Recovery Ratio	Subsidy Per Patron
17	23,681	1,288	18.4	14.37%	\$6.38	19.8	16.06%	\$5.83	258,489	18.4	16.45%	\$6.01
22	18,912	1,244	15.2	12.26%	\$7.88	15.6	13.48%	\$7.60	225,872	16.6	14.93%	\$6.73
23	22,125	1,120	19.7	17.50%	\$5.56	27.5	20.82%	\$3.96	249,017	20.5	19.81%	\$5.03
29	15,037	893	16.8	14.46%	\$6.84	19.0	15.60%	\$6.09	174,584	17.6	17.82%	\$6.08
49	11,911	525	22.7	15.63%	\$5.10	23.2	18.18%	\$4.85	130,216	22.3	18.15%	\$4.84
Total	91,666	5,069	18.1	14.67%	\$6.40	20.8	16.71%	\$5.49	1,038,178	18.7	17.22%	\$5.80



Monthly Monitoring Route Report

May 2016

3. Local Connector	May 2016					May 2015			FY 2016 To Date			
	Patrons	Revenue Service Hours	Patrons Per Hour	Farebox Recovery Ratio	Subsidy Per Patron	Patrons Per Hour	Farebox Recovery Ratio	Subsidy Per Patron	Patrons	Patrons Per Hour	Farebox Recovery Ratio	Subsidy Per Patron
219	4,864	555	8.8	11.89%	\$9.07	9.6	10.98%	\$7.77	50,800	8.4	11.54%	\$9.52
228	1,201	255	4.7	8.26%	\$17.39	5.1	6.70%	\$15.03	13,650	5.2	8.89%	\$15.44
233	4,058	369	11.0	13.40%	\$7.03	11.6	13.18%	\$6.15	45,445	11.3	14.21%	\$6.76
251	8,620	780	11.1	13.90%	\$7.07	10.2	11.52%	\$7.29	91,215	10.8	13.64%	\$7.26
257	6,009	520	11.5	13.67%	\$6.77	10.3	11.68%	\$7.16	65,559	11.3	13.65%	\$6.91
259	12,432	861	14.4	17.41%	\$5.21	14.5	15.56%	\$4.95	134,808	14.5	17.78%	\$5.18
Total	37,184	3,339	11.1	13.96%	\$6.99	11.0	12.30%	\$6.71	401,477	11.1	14.09%	\$7.01

4. Supplemental	May 2016					May 2015			FY 2016 To Date			
	Patrons	Revenue Service Hours	Patrons Per Hour	Farebox Recovery Ratio	Subsidy Per Patron	Patrons Per Hour	Farebox Recovery Ratio	Subsidy Per Patron	Patrons	Patrons Per Hour	Farebox Recovery Ratio	Subsidy Per Patron
113	1,632	35	47.0	35.62%	\$1.66	72.1	34.07%	\$1.42	13,961	55.6	37.08%	\$1.74
115	1,929	60	32.3	20.58%	\$3.12	29.4	15.21%	\$4.23	15,801	29.5	16.13%	\$4.62
117	3,834	64	59.5	34.46%	\$1.32	112.8	124.34%	-\$0.28	31,566	61.7	31.21%	\$1.70
119	2,860	46	61.9	40.70%	\$1.32	58.4	26.81%	\$2.01	29,643	71.4	45.06%	\$1.35
125	1,399	69	20.3	18.55%	\$4.39	22.1	13.32%	\$5.04	12,674	22.2	16.45%	\$5.52
139	745	29	25.4	20.41%	\$3.71	29.3	15.95%	\$4.00	6,167	20.2	14.78%	\$6.61
145	1,351	19	70.7	46.12%	\$0.82	108.8	58.71%	\$0.51	9,882	61.8	30.25%	\$1.64
151	4,710	84	56.3	31.85%	\$1.35	45.9	27.29%	\$1.98	41,111	56.3	26.62%	\$1.93
154	2,167	40	54.0	42.96%	\$1.12	52.4	31.43%	\$1.61	17,105	49.5	33.04%	\$1.94
Total	20,627	446	46.2	30.77%	\$1.76	51.3	34.94%	\$1.73	177,910	46.5	26.92%	\$2.42



Monthly Monitoring Route Report

May 2016

	May 2016					May 2015			FY 2016 To Date			
	Patrons	Revenue Service Hours	Patrons Per Hour	Farebox Recovery Ratio	Subsidy Per Patron	Patrons Per Hour	Farebox Recovery Ratio	Subsidy Per Patron	Patrons	Patrons Per Hour	Farebox Recovery Ratio	Subsidy Per Patron
5. Rural												
61	3,568	548	6.5	10.96%	\$10.05	6.5	10.58%	\$9.68	32,615	6.5	10.31%	\$10.26
65						1.2	3.03%	\$55.30	220	1.4	1.64%	\$54.03
68	6,258	907	6.9	11.14%	\$9.68	6.2	9.88%	\$10.51	63,321	6.5	9.12%	\$10.72
Total	9,826	1,455	6.8	11.07%	\$9.82	6.2	10.01%	\$10.34	96,156	6.5	9.43%	\$10.66

	May 2016					May 2015			FY 2016 To Date			
	Patrons	Revenue Service Hours	Patrons Per Hour	Farebox Recovery Ratio	Subsidy Per Patron	Patrons Per Hour	Farebox Recovery Ratio	Subsidy Per Patron	Patrons	Patrons Per Hour	Farebox Recovery Ratio	Subsidy Per Patron
6. Partnership Services												
122	1,597	258	6.2	55.32%	\$7.49				20,360	6.9	46.77%	\$8.46
Total	1,597	258	6.2	55.32%	\$7.49				20,360	6.9	46.77%	\$8.46

	May 2016					May 2015			FY 2016 To Date			
	Patrons	Revenue Service Hours	Patrons Per Hour	Farebox Recovery Ratio	Subsidy Per Patron	Patrons Per Hour	Farebox Recovery Ratio	Subsidy Per Patron	Patrons	Patrons Per Hour	Farebox Recovery Ratio	Subsidy Per Patron
7. Yellow Bus												
Brookside												\$0.00
Hdn Valley	1,093	25	44.4	16.42%	\$12.81				8,027	40.8	17.93%	\$13.26
White Hill	15,439	101	152.3	56.19%	\$1.96				120,923	149.0	65.97%	\$1.51
Total	16,532	126	131.2	48.44%	\$2.68				128,950	127.9	56.60%	\$2.24



8. Recreational	May 2016					May 2015			FY 2016 To Date			
	Patrons	Revenue Service Hours	Patrons Per Hour	Farebox Recovery Ratio	Subsidy Per Patron	Patrons Per Hour	Farebox Recovery Ratio	Subsidy Per Patron	Patrons	Patrons Per Hour	Farebox Recovery Ratio	Subsidy Per Patron
66	12,506	476	26.3	56.90%	\$1.65	24.9	49.63%	\$2.37	96,739	24.6	44.87%	\$2.61
Total	12,506	476	26.3	56.90%	\$1.65	24.9	49.63%	\$2.37	96,739	24.6	44.87%	\$2.61

9. Demand Response	May 2016					May 2015			FY 2016 To Date			
	Patrons	Revenue Service Hours	Patrons Per Hour	Farebox Recovery Ratio	Subsidy Per Patron	Patrons Per Hour	Farebox Recovery Ratio	Subsidy Per Patron	Patrons	Patrons Per Hour	Farebox Recovery Ratio	Subsidy Per Patron
Dillon DAR	20	20	1.0	5.58%	\$59.28				211	1.7	6.81%	\$35.64
Local Para	10,482	4,660	2.2	5.53%	\$31.36	2.3	4.41%	\$40.35	114,462	2.2	4.72%	\$37.10
Novato DAR	354	190	1.9	5.71%	\$37.89	2.4	4.89%	\$32.04	4,082	2.1	5.77%	\$36.93
Total	10,856	4,870	2.2	5.54%	\$31.63	2.3	4.43%	\$40.01	118,755	2.2	4.76%	\$37.09



FY 2016 -- Monthly Performance Charts

Program - 1. Fixed Route Local Service

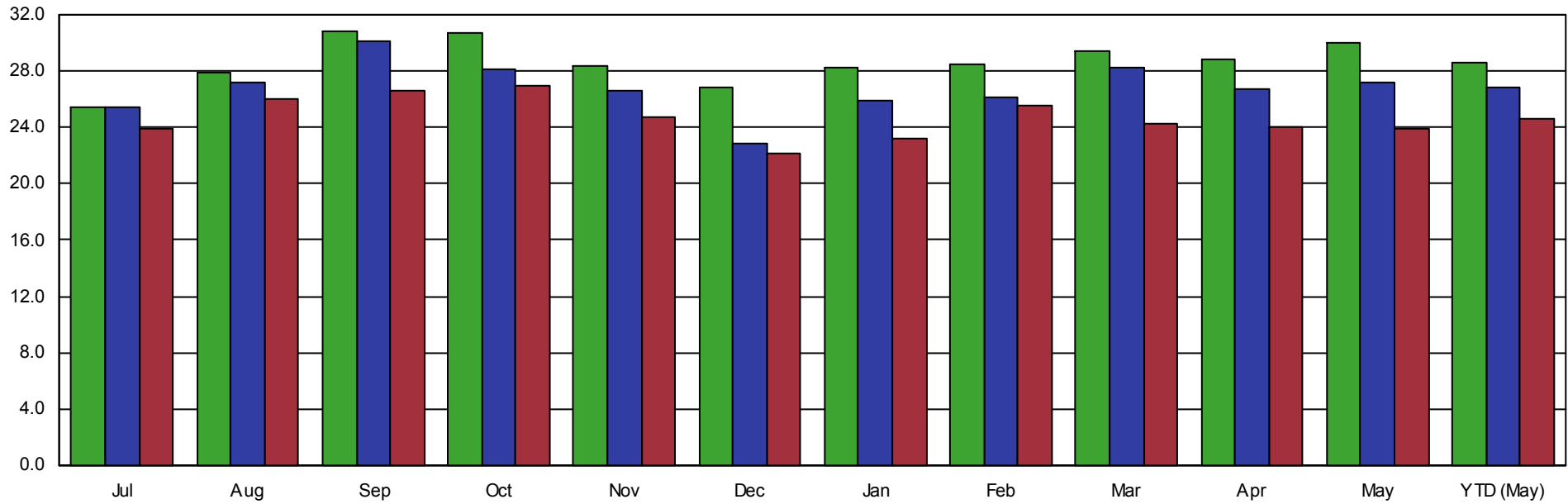
Year-To-Date through May

All Routes

Passengers Per Revenue Hour

Target: None

Two Years Prior Prior Year Current Year





FY 2016 -- Monthly Performance Charts

Program - 2. Fixed Route Shuttle Service

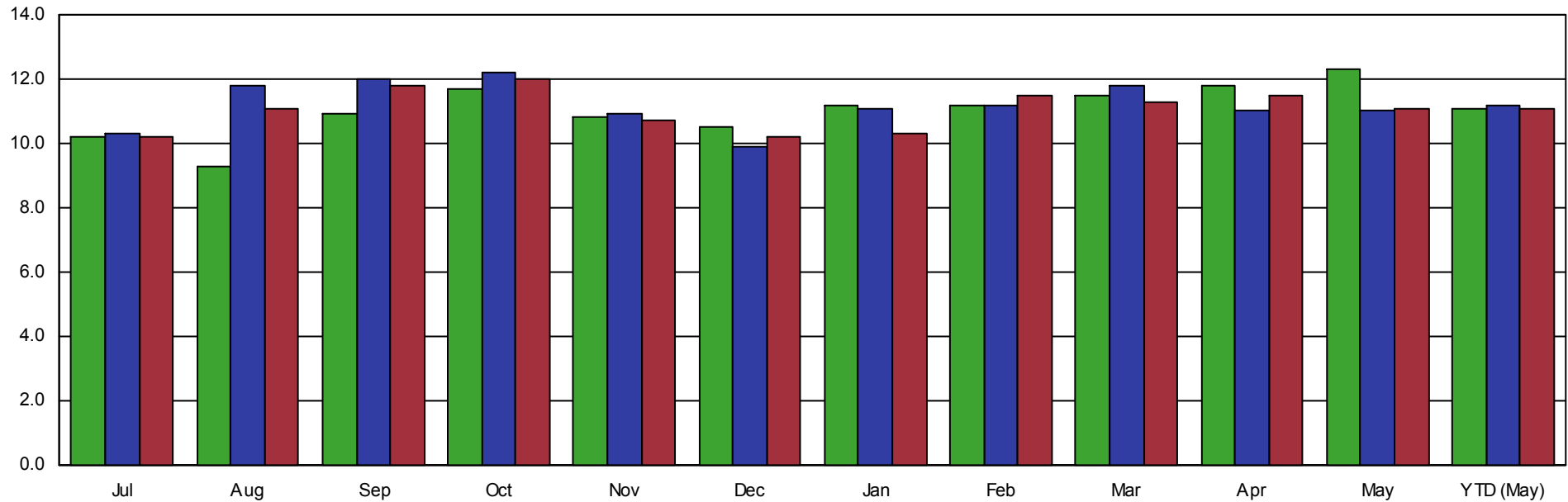
Year-To-Date through May

All Routes

Passengers Per Revenue Hour

Target: None

Two Years Prior Prior Year Current Year





FY 2016 -- Monthly Performance Charts

Program - 6. Fixed Route Stage Service

Year-To-Date through May

All Routes

Passengers Per Revenue Hour

Target: None

Two Years Prior Prior Year Current Year

