



A. Fixed Route Service	March 2016								March 2015			FY 2016 To Date			
	Patrons	Fare Revenue	Operating Expense	Revenue Service Miles	Revenue Service Hours	Patrons Per Hour	Farebox Recovery Ratio	Subsidy Per Patron	Patrons Per Hour	Farebox Recovery Ratio	Subsidy Per Patron	Patrons	Patrons Per Hour	Farebox Recovery Ratio	Subsidy Per Patron
1. Fixed Route Local Service	187,196	\$201,956	\$1,026,570	98,409	7,709	24.3	19.67%	\$4.41	28.2	21.22%	\$3.91	1,642,629	24.79	22.74%	\$4.06
2. Fixed Route Shuttle Service	38,051	\$41,376	\$301,586	50,781	3,361	11.3	13.72%	\$6.84	11.8	17.57%	\$5.96	327,026	11.02	13.79%	\$7.08
3. Muir Woods Shuttle												76,215	24.71	44.69%	\$2.59
4. Supplemental School Service	21,332	\$14,423	\$63,293	6,273	483	44.2	22.79%	\$2.29	51.5	32.89%	\$2.21	141,795	46.93	25.80%	\$2.59
5. College of Marin	3,159	\$9,884	\$46,458	4,258	397	8.0	21.27%	\$11.58				16,638	6.99	46.14%	\$8.63
6. Fixed Route Stage Service	8,482	\$9,764	\$102,598	24,797	1,408	6.0	9.52%	\$10.94	6.6	12.54%	\$9.69	77,216	6.42	8.86%	\$10.89
Total	258,220	\$277,403	\$1,540,505	184,518	13,357	19.3	18.01%	\$4.89	22.6	20.68%	\$4.20	2,281,519	19.59	21.15%	\$4.61

B. Yellow Bus	March 2016								March 2015			FY 2016 To Date			
	Patrons	Fare Revenue	Operating Expense	Revenue Service Miles	Revenue Service Hours	Patrons Per Hour	Farebox Recovery Ratio	Subsidy Per Patron	Patrons Per Hour	Farebox Recovery Ratio	Subsidy Per Patron	Patrons	Patrons Per Hour	Farebox Recovery Ratio	Subsidy Per Patron
1. Yellow Bus	16,658	\$46,844	\$78,371	1,729	132	126.2	59.77%	\$1.89				100,137	127.40	58.02%	\$2.15
Total	16,658	\$46,844	\$78,371	1,729	132	126.2	59.77%	\$1.89				100,137	127.40	58.02%	\$2.15

C. Demand Response	March 2016								March 2015			FY 2016 To Date			
	Patrons	Fare Revenue	Operating Expense	Revenue Service Miles	Revenue Service Hours	Patrons Per Hour	Farebox Recovery Ratio	Subsidy Per Patron	Patrons Per Hour	Farebox Recovery Ratio	Subsidy Per Patron	Patrons	Patrons Per Hour	Farebox Recovery Ratio	Subsidy Per Patron
1. Catch-A-Ride	1,477	\$3,437	\$27,869	4,165	0	0.0	12.33%	\$16.54	0.0	7.47%	\$17.08	12,260	0.00	11.88%	\$16.70
2. Local Paratransit	11,044	\$19,910	\$346,232	78,848	5,098	2.2	5.75%	\$29.55	2.3	4.54%	\$38.16	93,457	2.20	4.57%	\$38.37
3. Novato Dial-A-Ride	349	\$827	\$13,900	2,124	184	1.9	5.95%	\$37.46	2.4	9.87%	\$30.37	3,361	2.07	5.70%	\$37.25
4. Volunteer Driver	1,506		\$9,603	14,398	1,545	1.0			0.9			11,943	0.90		
5. Dillon Beach Dial-A-Ride	46	\$115	\$1,373	0	25	1.8	8.38%	\$27.35				159	1.83	7.14%	\$32.65
Total	14,422	\$24,289	\$398,977	99,534	6,852	2.1	6.09%	\$25.98	2.2	4.75%	\$32.91	121,180	2.11	4.76%	\$34.23



Monthly Monitoring Route Report

March 2016

1. Local Trunkline	March 2016					March 2015			FY 2016 To Date			
	Patrons	Revenue Service Hours	Patrons Per Hour	Farebox Recovery Ratio	Subsidy Per Patron	Patrons Per Hour	Farebox Recovery Ratio	Subsidy Per Patron	Patrons	Patrons Per Hour	Farebox Recovery Ratio	Subsidy Per Patron
35	39,651	730	54.3	47.27%	\$1.27	60.3	37.56%	\$1.45	349,796	54.4	51.15%	\$1.15
36	10,343	257	40.2	30.62%	\$2.32	43.6	29.03%	\$2.28	83,298	38.2	32.75%	\$2.31
45	16,775	745	22.5	14.93%	\$4.98	28.1	21.15%	\$3.93	150,528	23.9	18.24%	\$4.40
71	21,985	677	32.5	26.80%	\$3.14	39.4	26.90%	\$2.60	203,177	35.2	31.58%	\$2.67
Total	88,754	2,409	36.8	29.66%	\$2.56	43.0	28.76%	\$2.31	786,799	38.0	33.64%	\$2.29

2. Local Basic	March 2016					March 2015			FY 2016 To Date			
	Patrons	Revenue Service Hours	Patrons Per Hour	Farebox Recovery Ratio	Subsidy Per Patron	Patrons Per Hour	Farebox Recovery Ratio	Subsidy Per Patron	Patrons	Patrons Per Hour	Farebox Recovery Ratio	Subsidy Per Patron
17	23,152	1,327	17.4	13.69%	\$6.63	20.0	17.02%	\$5.82	212,758	18.4	16.97%	\$5.90
22	21,371	1,275	16.8	13.53%	\$6.89	18.5	16.30%	\$6.32	187,782	16.9	15.44%	\$6.55
23	23,011	1,145	20.1	17.35%	\$5.38	26.5	20.37%	\$4.20	204,721	20.6	20.31%	\$4.94
29	17,609	978	18.0	15.67%	\$6.19	19.9	17.01%	\$5.83	144,199	17.7	18.45%	\$5.95
49	13,299	575	23.1	16.51%	\$4.83	25.0	19.60%	\$4.50	106,370	22.2	18.63%	\$4.80
Total	98,442	5,300	18.6	15.10%	\$6.07	21.7	17.90%	\$5.30	855,830	18.8	17.75%	\$5.68



Monthly Monitoring Route Report

March 2016

3. Local Connector	March 2016					March 2015			FY 2016 To Date			
	Patrons	Revenue Service Hours	Patrons Per Hour	Farebox Recovery Ratio	Subsidy Per Patron	Patrons Per Hour	Farebox Recovery Ratio	Subsidy Per Patron	Patrons	Patrons Per Hour	Farebox Recovery Ratio	Subsidy Per Patron
219	4,504	571	7.9	10.66%	\$10.14	9.6	15.65%	\$7.46	41,354	8.3	11.29%	\$9.62
228	1,026	204	5.0	8.26%	\$16.18	5.6	12.26%	\$13.03	11,250	5.3	8.85%	\$15.26
233	4,314	376	11.5	14.00%	\$6.65	12.6	18.66%	\$5.39	37,249	11.3	14.11%	\$6.77
251	8,820	779	11.3	13.35%	\$6.89	11.1	16.89%	\$6.40	73,991	10.7	13.24%	\$7.36
257	6,857	570	12.0	13.80%	\$6.43	12.5	18.17%	\$5.59	53,537	11.3	13.35%	\$6.97
259	12,530	860	14.6	17.17%	\$5.14	14.6	19.96%	\$4.70	109,645	14.4	17.39%	\$5.25
Total	38,051	3,361	11.3	13.72%	\$6.84	11.8	17.57%	\$5.96	327,026	11.0	13.79%	\$7.08

4. Supplemental	March 2016					March 2015			FY 2016 To Date			
	Patrons	Revenue Service Hours	Patrons Per Hour	Farebox Recovery Ratio	Subsidy Per Patron	Patrons Per Hour	Farebox Recovery Ratio	Subsidy Per Patron	Patrons	Patrons Per Hour	Farebox Recovery Ratio	Subsidy Per Patron
113	1,795	36	49.4	28.19%	\$1.96	64.0	23.79%	\$2.24	10,823	56.8	35.70%	\$1.86
115	1,672	65	25.7	13.29%	\$4.70	31.8	13.94%	\$4.90	12,502	30.1	15.33%	\$4.88
117	3,765	68	55.6	25.18%	\$1.78	109.4	90.28%	\$0.15	24,786	62.3	29.77%	\$1.82
119	3,389	47	71.6	39.02%	\$1.26	55.9	20.67%	\$2.74	24,895	74.6	45.36%	\$1.35
125	1,546	72	21.4	15.60%	\$4.91	25.7	13.10%	\$5.56	10,121	22.5	15.60%	\$5.88
139	689	32	21.4	14.02%	\$5.30	26.2	12.55%	\$5.81	4,931	19.4	13.90%	\$7.30
145	1,320	21	61.7	27.09%	\$1.45	67.9	27.98%	\$1.79	7,483	59.0	26.92%	\$1.92
151	4,892	95	51.8	21.11%	\$1.92	39.3	18.48%	\$3.34	32,940	56.9	25.40%	\$2.07
154	2,264	46	49.1	29.00%	\$1.75	52.6	23.72%	\$2.32	13,314	48.6	30.89%	\$2.18
Total	21,332	483	44.2	22.79%	\$2.29	48.2	25.99%	\$2.63	141,795	46.9	25.80%	\$2.59



Monthly Monitoring Route Report

March 2016

	March 2016					March 2015			FY 2016 To Date			
	Patrons	Revenue Service Hours	Patrons Per Hour	Farebox Recovery Ratio	Subsidy Per Patron	Patrons Per Hour	Farebox Recovery Ratio	Subsidy Per Patron	Patrons	Patrons Per Hour	Farebox Recovery Ratio	Subsidy Per Patron
5. Rural												
61	2,670	504	5.3	8.65%	\$12.39	7.3	13.78%	\$8.56	25,679	6.5	9.83%	\$10.38
65						1.3	4.12%	\$55.03	220	1.4	1.64%	\$54.03
68	5,812	904	6.4	9.99%	\$10.28	6.4	12.08%	\$10.17	51,317	6.5	8.53%	\$10.96
Total	8,482	1,408	6.0	9.52%	\$10.94	6.6	12.54%	\$9.69	77,216	6.4	8.86%	\$10.89

	March 2016					March 2015			FY 2016 To Date			
	Patrons	Revenue Service Hours	Patrons Per Hour	Farebox Recovery Ratio	Subsidy Per Patron	Patrons Per Hour	Farebox Recovery Ratio	Subsidy Per Patron	Patrons	Patrons Per Hour	Farebox Recovery Ratio	Subsidy Per Patron
6. Partnership Services												
122	3,159	397	8.0	21.27%	\$11.58				16,638	7.0	46.14%	\$8.63
Total	3,159	397	8.0	21.27%	\$11.58				16,638	7.0	46.14%	\$8.63

	March 2016					March 2015			FY 2016 To Date			
	Patrons	Revenue Service Hours	Patrons Per Hour	Farebox Recovery Ratio	Subsidy Per Patron	Patrons Per Hour	Farebox Recovery Ratio	Subsidy Per Patron	Patrons	Patrons Per Hour	Farebox Recovery Ratio	Subsidy Per Patron
7. Yellow Bus												
Brookside												\$0.00
Hdn Valley	1,035	26	40.3	19.05%	\$11.95				6,071	39.6	17.89%	\$13.56
White Hill	15,623	106	147.0	69.64%	\$1.23				94,066	148.7	67.74%	\$1.42
Total	16,658	132	126.2	59.77%	\$1.89				100,137	127.4	58.02%	\$2.15



Monthly Monitoring Route Report

March 2016

	March 2016					March 2015			FY 2016 To Date			
	Patrons	Revenue Service Hours	Patrons Per Hour	Farebox Recovery Ratio	Subsidy Per Patron	Patrons Per Hour	Farebox Recovery Ratio	Subsidy Per Patron	Patrons	Patrons Per Hour	Farebox Recovery Ratio	Subsidy Per Patron
8. Recreational												
66									76,215	24.7	44.69%	\$2.59
Total									76,215	24.7	44.69%	\$2.59

	March 2016					March 2015			FY 2016 To Date			
	Patrons	Revenue Service Hours	Patrons Per Hour	Farebox Recovery Ratio	Subsidy Per Patron	Patrons Per Hour	Farebox Recovery Ratio	Subsidy Per Patron	Patrons	Patrons Per Hour	Farebox Recovery Ratio	Subsidy Per Patron
9. Demand Response												
Dillon DAR	46	25	1.8	8.38%	\$27.35				159	1.8	7.14%	\$32.65
Local DAR	11,044	5,090	2.2	5.76%	\$29.50	2.3	4.55%	\$38.09	93,457	2.2	4.57%	\$38.32
Novato DAR	349	184	1.9	5.95%	\$37.46	2.4	9.87%	\$30.37	3,361	2.1	5.70%	\$37.25
Total	11,439	5,299	2.2	5.78%	\$29.73	2.3	4.70%	\$37.82	96,977	2.2	4.62%	\$38.28



FY 2016 -- Monthly Performance Charts

Program - 1. Fixed Route Local Service

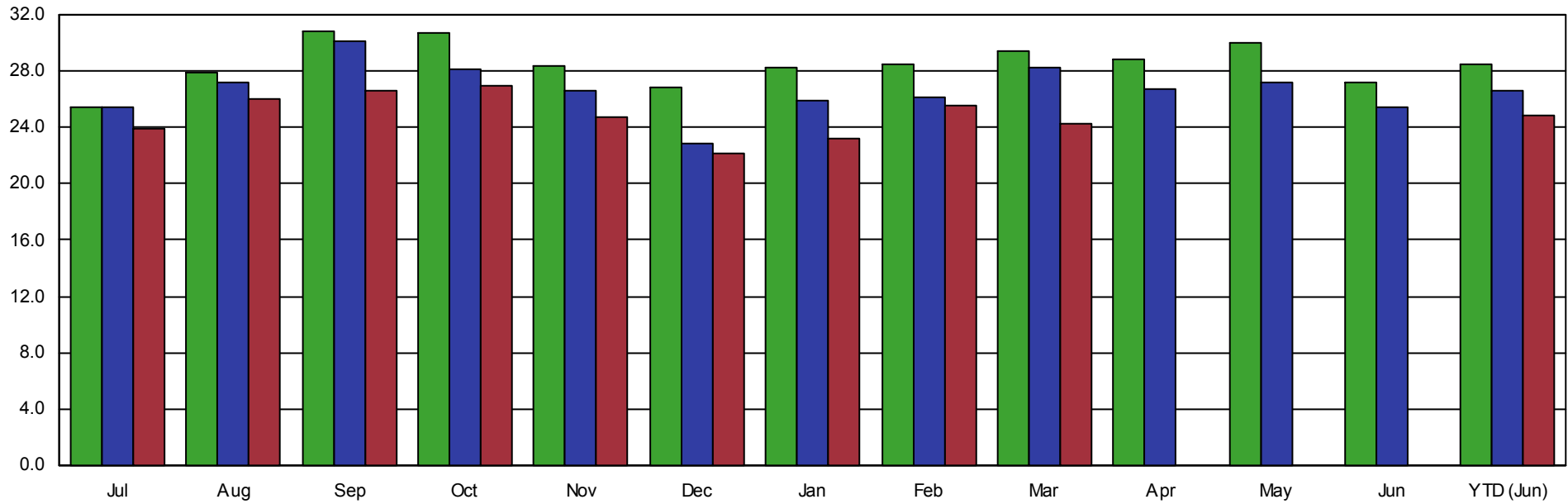
Year-To-Date through June

All Routes

Passengers Per Revenue Hour

Target: None

Two Years Prior Prior Year Current Year





FY 2016 -- Monthly Performance Charts

Program - 2. Fixed Route Shuttle Service

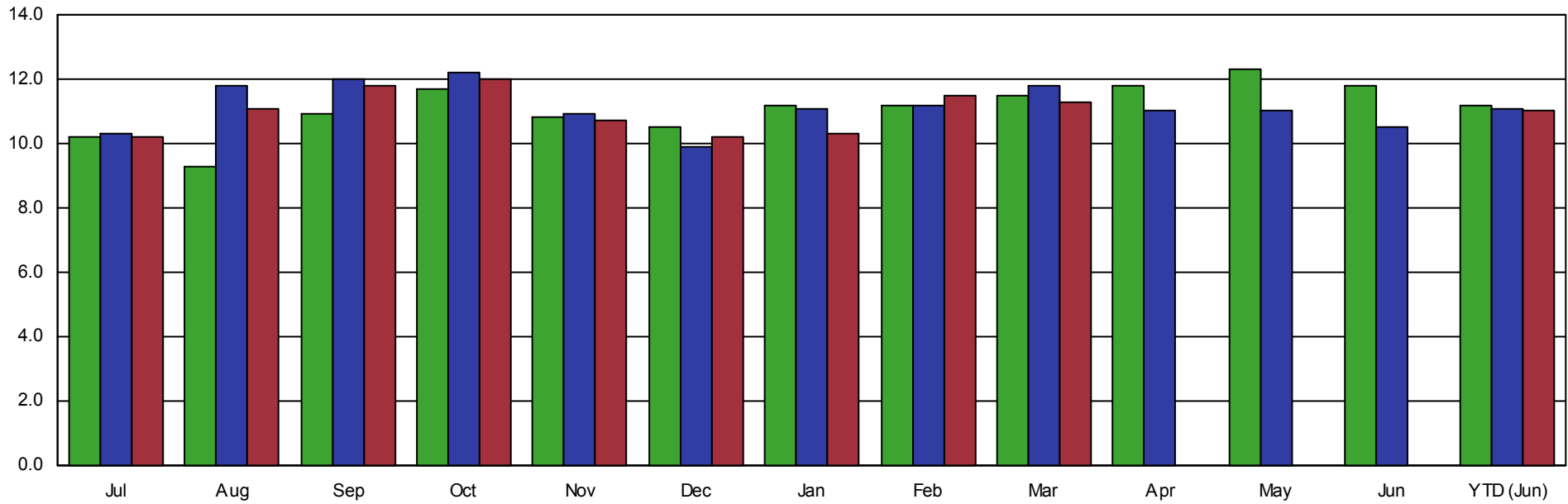
Year-To-Date through June

All Routes

Passengers Per Revenue Hour

Target: None

Two Years Prior Prior Year Current Year





FY 2016 -- Monthly Performance Charts

Program - 6. Fixed Route Stage Service

Year-To-Date through June

All Routes

Passengers Per Revenue Hour

Target: None

Two Years Prior Prior Year Current Year

