



A. Fixed Route Service	February 2016								February 2015			FY 2016 To Date			
	Patrons	Fare Revenue	Operating Expense	Revenue Service Miles	Revenue Service Hours	Patrons Per Hour	Farebox Recovery Ratio	Subsidy Per Patron	Patrons Per Hour	Farebox Recovery Ratio	Subsidy Per Patron	Patrons	Patrons Per Hour	Farebox Recovery Ratio	Subsidy Per Patron
1. Fixed Route Local Service	177,524	\$192,982	\$896,385	88,552	6,950	25.5	21.53%	\$3.96	26.1	20.44%	\$4.30	1,455,433	24.86	23.15%	\$4.01
2. Fixed Route Shuttle Service	36,124	\$41,142	\$277,934	47,259	3,128	11.5	14.80%	\$6.55	11.2	13.09%	\$6.91	288,975	10.98	13.80%	\$7.11
3. Muir Woods Shuttle												76,215	24.71	44.89%	\$2.57
4. Supplemental School Service	16,120	\$14,509	\$58,242	4,622	361	44.7	24.91%	\$2.71	50.5	35.51%	\$2.22	120,463	47.45	26.24%	\$2.64
5. College of Marin	2,589	\$10,812	\$39,189	3,512	328	7.9	27.59%	\$10.96				13,479	6.79	51.38%	\$7.94
6. Fixed Route Stage Service	7,693	\$7,162	\$94,265	20,904	1,169	6.6	7.60%	\$11.32	6.5	8.36%	\$12.50	68,734	6.47	8.78%	\$10.88
<b>Total</b>	<b>240,050</b>	<b>\$266,608</b>	<b>\$1,366,017</b>	<b>164,849</b>	<b>11,935</b>	<b>20.1</b>	<b>19.52%</b>	<b>\$4.58</b>	<b>21.0</b>	<b>18.93%</b>	<b>\$4.74</b>	<b>2,023,299</b>	<b>19.62</b>	<b>21.56%</b>	<b>\$4.58</b>

B. Yellow Bus	February 2016								February 2015			FY 2016 To Date			
	Patrons	Fare Revenue	Operating Expense	Revenue Service Miles	Revenue Service Hours	Patrons Per Hour	Farebox Recovery Ratio	Subsidy Per Patron	Patrons Per Hour	Farebox Recovery Ratio	Subsidy Per Patron	Patrons	Patrons Per Hour	Farebox Recovery Ratio	Subsidy Per Patron
1. Yellow Bus	12,429	\$31,155	\$60,465	1,258	96	129.5	51.53%	\$2.36				83,618	127.86	57.71%	\$2.20
<b>Total</b>	<b>12,429</b>	<b>\$31,155</b>	<b>\$60,465</b>	<b>1,258</b>	<b>96</b>	<b>129.5</b>	<b>51.53%</b>	<b>\$2.36</b>				<b>83,618</b>	<b>127.86</b>	<b>57.71%</b>	<b>\$2.20</b>

C. Demand Response	February 2016								February 2015			FY 2016 To Date			
	Patrons	Fare Revenue	Operating Expense	Revenue Service Miles	Revenue Service Hours	Patrons Per Hour	Farebox Recovery Ratio	Subsidy Per Patron	Patrons Per Hour	Farebox Recovery Ratio	Subsidy Per Patron	Patrons	Patrons Per Hour	Farebox Recovery Ratio	Subsidy Per Patron
1. Catch-A-Ride	1,413	\$3,821	\$28,130	4,187	0	0.0	13.58%	\$17.20	0.0	9.33%	\$17.03	10,783	0.00	11.82%	\$16.72
2. Local Paratransit	10,021	\$17,911	\$335,094	68,529	4,404	2.3	5.35%	\$31.65	2.3	4.55%	\$38.65	82,413	2.21	4.45%	\$39.56
3. Novato Dial-A-Ride	329	\$816	\$12,927	1,759	167	2.0	6.31%	\$36.81	2.1	2.99%	\$40.58	3,012	2.10	5.67%	\$37.22
4. Volunteer Driver	1,396		\$21,013	14,859	1,547	0.9			0.9			10,437	0.89		
5. Dillon Beach Dial-A-Ride	33	\$88	\$1,122	0	20	1.7	7.80%	\$31.34				101	1.64	6.74%	\$38.95
<b>Total</b>	<b>13,192</b>	<b>\$22,635</b>	<b>\$398,285</b>	<b>89,334</b>	<b>6,138</b>	<b>2.1</b>	<b>5.68%</b>	<b>\$28.48</b>	<b>2.2</b>	<b>4.69%</b>	<b>\$33.21</b>	<b>106,746</b>	<b>2.11</b>	<b>4.62%</b>	<b>\$35.34</b>



**Monthly Monitoring Route Report**

February 2016

1. Local Trunkline	February 2016					February 2015			FY 2016 To Date			
	Patrons	Revenue Service Hours	Patrons Per Hour	Farebox Recovery Ratio	Subsidy Per Patron	Patrons Per Hour	Farebox Recovery Ratio	Subsidy Per Patron	Patrons	Patrons Per Hour	Farebox Recovery Ratio	Subsidy Per Patron
35	37,896	678	55.9	48.85%	\$1.16	53.1	38.72%	\$1.62	310,145	54.4	51.66%	\$1.13
36	10,820	228	47.5	32.65%	\$1.84	39.0	29.20%	\$2.55	72,955	37.9	33.04%	\$2.31
45	15,708	670	23.5	16.62%	\$4.54	25.8	20.28%	\$4.34	133,753	24.1	18.69%	\$4.33
71	20,657	595	34.7	30.14%	\$2.71	38.0	28.52%	\$2.65	181,192	35.6	32.23%	\$2.61
<b>Total</b>	85,081	2,171	39.2	32.02%	\$2.25	39.3	29.40%	\$2.53	698,045	38.2	34.17%	\$2.25

2. Local Basic	February 2016					February 2015			FY 2016 To Date			
	Patrons	Revenue Service Hours	Patrons Per Hour	Farebox Recovery Ratio	Subsidy Per Patron	Patrons Per Hour	Farebox Recovery Ratio	Subsidy Per Patron	Patrons	Patrons Per Hour	Farebox Recovery Ratio	Subsidy Per Patron
17	21,809	1,210	18.0	15.35%	\$6.09	19.2	15.78%	\$6.18	189,606	18.6	17.41%	\$5.81
22	20,488	1,170	17.5	15.15%	\$6.27	17.3	14.52%	\$6.94	166,411	16.9	15.69%	\$6.50
23	23,233	1,053	22.1	19.33%	\$4.64	25.1	19.79%	\$4.49	181,710	20.6	20.70%	\$4.88
29	16,109	850	19.0	17.63%	\$5.57	17.8	14.84%	\$6.74	126,590	17.6	18.83%	\$5.92
49	10,804	497	21.7	16.93%	\$4.96	22.6	18.07%	\$5.11	93,071	22.1	18.93%	\$4.80
<b>Total</b>	92,443	4,780	19.3	16.73%	\$5.54	20.2	16.48%	\$5.81	757,388	18.8	18.11%	\$5.63



**Monthly Monitoring Route Report**

February 2016

3. Local Connector	February 2016					February 2015			FY 2016 To Date			
	Patrons	Revenue Service Hours	Patrons Per Hour	Farebox Recovery Ratio	Subsidy Per Patron	Patrons Per Hour	Farebox Recovery Ratio	Subsidy Per Patron	Patrons	Patrons Per Hour	Farebox Recovery Ratio	Subsidy Per Patron
219	4,303	522	8.2	12.23%	\$9.44	9.4	10.96%	\$8.42	36,850	8.4	11.37%	\$9.55
228	1,215	230	5.3	9.26%	\$15.05	5.1	5.84%	\$16.29	10,224	5.3	8.91%	\$15.17
233	3,931	346	11.4	14.67%	\$6.60	12.3	14.60%	\$6.10	32,935	11.3	14.12%	\$6.78
251	7,852	729	10.8	13.65%	\$7.15	10.3	12.01%	\$7.61	65,171	10.6	13.23%	\$7.43
257	6,383	496	12.9	15.50%	\$5.83	12.0	14.01%	\$6.40	46,680	11.1	13.29%	\$7.05
259	12,440	805	15.4	18.68%	\$4.71	14.0	16.31%	\$5.37	97,115	14.3	17.41%	\$5.26
<b>Total</b>	36,124	3,128	11.5	14.80%	\$6.55	11.2	13.09%	\$6.91	288,975	11.0	13.80%	\$7.11

4. Supplemental	February 2016					February 2015			FY 2016 To Date			
	Patrons	Revenue Service Hours	Patrons Per Hour	Farebox Recovery Ratio	Subsidy Per Patron	Patrons Per Hour	Farebox Recovery Ratio	Subsidy Per Patron	Patrons	Patrons Per Hour	Farebox Recovery Ratio	Subsidy Per Patron
113	1,149	27	43.0	27.61%	\$2.76	67.9	29.68%	\$2.02	9,028	58.5	37.10%	\$1.84
115	1,438	57	25.2	14.59%	\$5.73	28.9	13.10%	\$5.61	10,830	30.9	15.63%	\$4.90
117	3,101	59	52.6	25.23%	\$2.31	96.5	91.35%	\$0.15	21,021	63.7	30.51%	\$1.83
119	2,890	35	82.1	49.15%	\$1.10	51.2	21.75%	\$3.06	21,506	75.1	46.17%	\$1.37
125	1,229	53	23.4	17.83%	\$5.43	25.2	12.74%	\$5.79	8,575	22.7	15.60%	\$6.06
139	435	22	19.7	14.25%	\$7.06	28.5	13.51%	\$5.42	4,242	19.1	13.89%	\$7.63
145	886	14	61.5	28.15%	\$1.79	83.5	41.06%	\$1.22	6,163	58.5	26.90%	\$2.01
151	3,674	64	57.9	25.82%	\$2.00	41.7	21.63%	\$3.08	28,048	57.8	26.04%	\$2.10
154	1,318	30	43.8	27.71%	\$2.51	54.2	28.46%	\$2.14	11,050	48.6	31.18%	\$2.26
<b>Total</b>	16,120	361	44.7	24.91%	\$2.71	47.9	29.10%	\$2.60	120,463	47.5	26.24%	\$2.64



**Monthly Monitoring Route Report**

February 2016

	February 2016					February 2015			FY 2016 To Date			
	Patrons	Revenue Service Hours	Patrons Per Hour	Farebox Recovery Ratio	Subsidy Per Patron	Patrons Per Hour	Farebox Recovery Ratio	Subsidy Per Patron	Patrons	Patrons Per Hour	Farebox Recovery Ratio	Subsidy Per Patron
5. Rural												
61	2,373	320	7.4	8.82%	\$9.78	7.3	8.99%	\$10.82	23,009	6.7	10.00%	\$10.15
65						1.3	5.14%	\$66.47	220	1.4	1.64%	\$54.03
68	5,320	849	6.3	7.15%	\$12.01	6.3	8.24%	\$12.87	45,505	6.5	8.36%	\$11.04
<b>Total</b>	7,693	1,169	6.6	7.60%	\$11.32	6.5	8.36%	\$12.50	68,734	6.5	8.78%	\$10.88

	February 2016					February 2015			FY 2016 To Date			
	Patrons	Revenue Service Hours	Patrons Per Hour	Farebox Recovery Ratio	Subsidy Per Patron	Patrons Per Hour	Farebox Recovery Ratio	Subsidy Per Patron	Patrons	Patrons Per Hour	Farebox Recovery Ratio	Subsidy Per Patron
6. Partnership Services												
122	2,589	328	7.9	27.59%	\$10.96				13,479	6.8	51.38%	\$7.94
<b>Total</b>	2,589	328	7.9	27.59%	\$10.96				13,479	6.8	51.38%	\$7.94

	February 2016					February 2015			FY 2016 To Date			
	Patrons	Revenue Service Hours	Patrons Per Hour	Farebox Recovery Ratio	Subsidy Per Patron	Patrons Per Hour	Farebox Recovery Ratio	Subsidy Per Patron	Patrons	Patrons Per Hour	Farebox Recovery Ratio	Subsidy Per Patron
7. Yellow Bus												
Brookside												\$0.00
Hdn Valley	820	19	43.9	17.43%	\$11.87				5,036	39.5	17.65%	\$13.89
White Hill	11,609	77	150.2	59.78%	\$1.69				78,582	149.3	67.41%	\$1.45
<b>Total</b>	12,429	96	129.5	51.53%	\$2.36				83,618	127.9	57.71%	\$2.20



**Monthly Monitoring Route Report**

February 2016

	February 2016					February 2015			FY 2016 To Date			
	Patrons	Revenue Service Hours	Patrons Per Hour	Farebox Recovery Ratio	Subsidy Per Patron	Patrons Per Hour	Farebox Recovery Ratio	Subsidy Per Patron	Patrons	Patrons Per Hour	Farebox Recovery Ratio	Subsidy Per Patron
<b>8. Recreational</b>												
66									76,215	24.7	44.89%	\$2.57
<b>Total</b>									76,215	24.7	44.89%	\$2.57

	February 2016					February 2015			FY 2016 To Date			
	Patrons	Revenue Service Hours	Patrons Per Hour	Farebox Recovery Ratio	Subsidy Per Patron	Patrons Per Hour	Farebox Recovery Ratio	Subsidy Per Patron	Patrons	Patrons Per Hour	Farebox Recovery Ratio	Subsidy Per Patron
<b>9. Demand Response</b>												
Dillon DAR	33	20	1.7	7.80%	\$31.34				101	1.6	6.74%	\$38.95
Local DAR	10,021	4,396	2.3	5.35%	\$31.59	2.3	4.55%	\$38.59	82,413	2.2	4.45%	\$39.50
Novato DAR	329	167	2.0	6.31%	\$36.81	2.1	2.99%	\$40.58	3,012	2.1	5.67%	\$37.22
<b>Total</b>	10,383	4,583	2.3	5.40%	\$31.76	2.3	4.51%	\$38.65	85,526	2.2	4.50%	\$39.42



# FY 2016 -- Monthly Performance Charts

Program - 1. Fixed Route Local Service

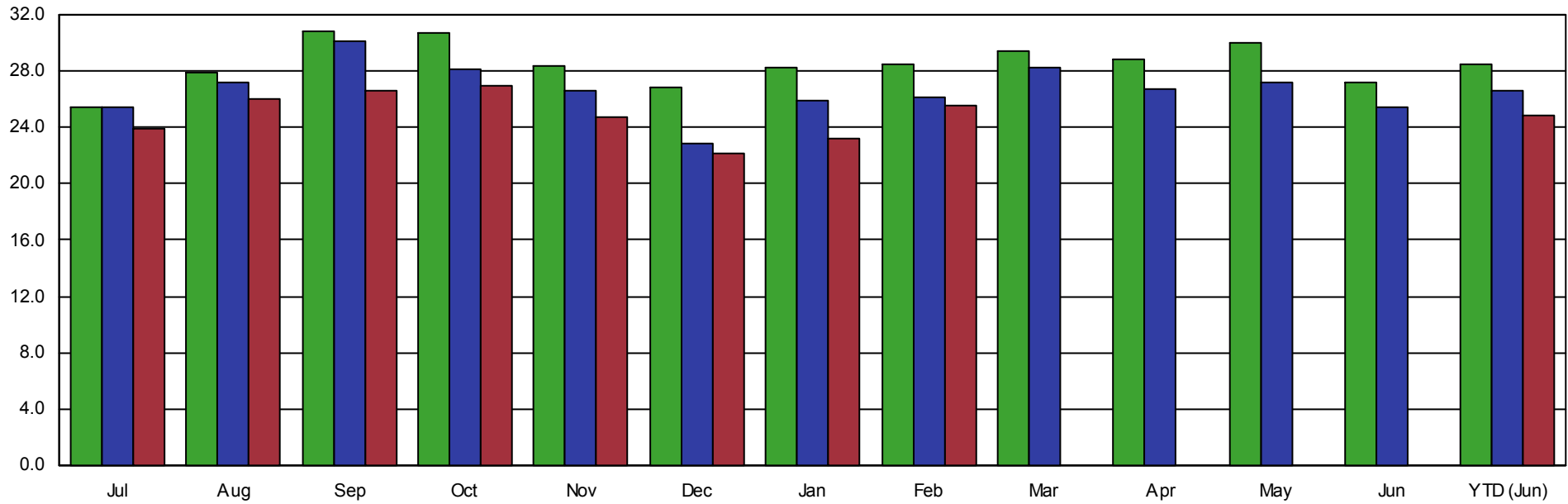
Year-To-Date through June

All Routes

## Passengers Per Revenue Hour

Target: None

Two Years Prior      Prior Year      Current Year





# FY 2016 -- Monthly Performance Charts

Program - 2. Fixed Route Shuttle Service

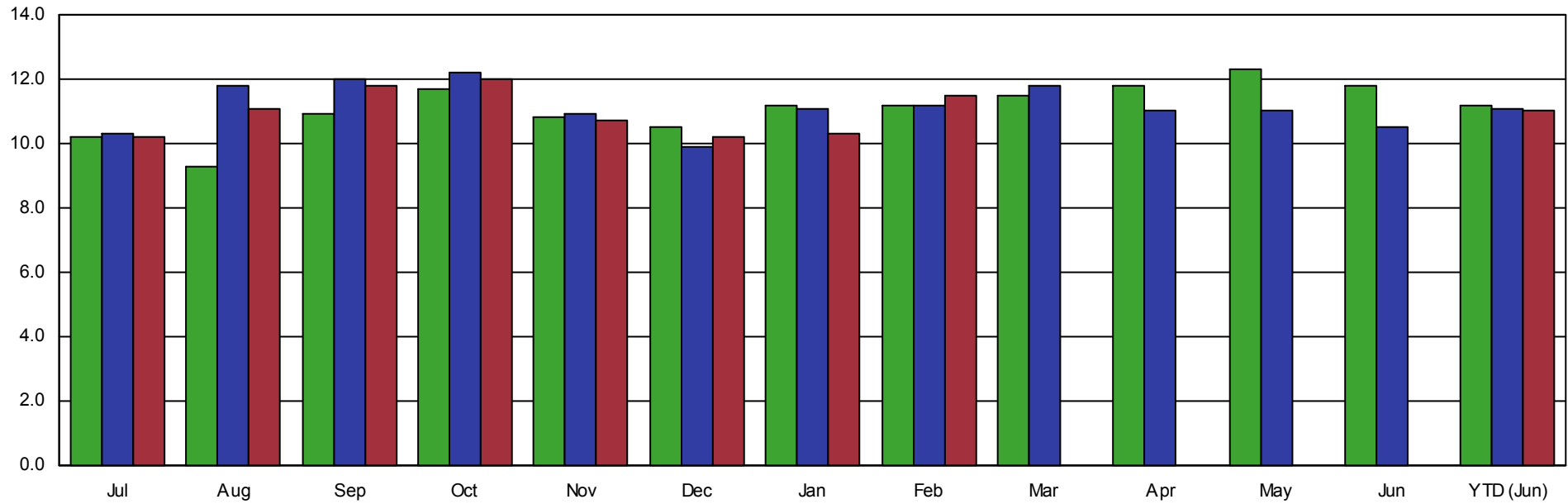
Year-To-Date through June

All Routes

## Passengers Per Revenue Hour

Target: None

Two Years Prior      Prior Year      Current Year





# FY 2016 -- Monthly Performance Charts

Program - 6. Fixed Route Stage Service

Year-To-Date through June

All Routes

## Passengers Per Revenue Hour

Target: None

Two Years Prior      Prior Year      Current Year

